

XTC LIGHTING GROUP



2019

High Bay
Indoor Lighting
Outdoor Lighting
LED Lighting



Table of Content



P10



P21



P23/P85

LED FIXTURES

LED Ceiling Fixture	02-05, 08-15,17,23-31
LED Square,Round and Deco Puff	18-22
LED Cloud	16
LED Pendant	07-09, 12, 28-31,50
LED Mini Pendant	44,45,49
LED Linear Pendant	48
LED Wall Sconce	32-42
LED Vanity	49,51-62,64
LED Outdoor Fixture	68-79
LED Vapor Tight	80-85
LED Under the Counter Light	86,87
LED Wraparound	88,89
LED Strip Re-trofit Kit	90
LED Strip	91-95
E26 & GU24 LED Bulb	95
LED T5 & T8 Tube	96,97
LED Flat Panel	98
LED Troffer	98
LED Re-trofit Kit for Troffer	99
LED Refrigerated Case Light & Display Case Light	100
LED Landscape Light	101
LED Underwater Light	101
LED Re-trofit Kit for Recess Can Light	102
LED Disk Light	103
LED High Bay	104-107
Round LED High Bay	108



P30



P41



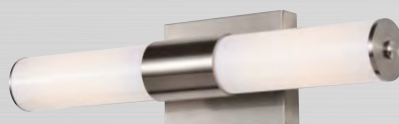
P54



P49



P55



P32/P58



P76



P32



P40



P47



P49

Fluorescent Fixtures

Ceiling Fixture	06,14,15,24-31
Square,Round and Deco Puff	18,19,22
Pendant	07, 28-31
Mini Pendant	46,47
Wall Sconce	34-37,43
Vanity	52,56,62,63,65,66,67
Outdoor Fixture	68-71,73-75
Vapor Tight	81,82
Under the Counter Light	86
Wraparound	88
Strip	93
High Bay	108

JA8 / CEC Listed Models

LED Ceiling Fixture	05
LED Wall Sconce	42
LED Vanity	51
LED Outdoor Fixture	70, 74



P58



P64



P33



P33

LED CEILING FIXTURE



- * Housing: Die-formed cold-rolled steel
- * Shade: High transmission acrylic creates excellent light distribution and uniformity
- * LED: High efficiency, high CRI, binned and mixed to reach uniform light
- * High power factor, low THD
- * 5 years warranty on driver and LED module
- * Certification: ETL / cETL, Energy Star
- * Finish Option: -62 Satin Nickel, -30 Oil Rubbed Bronze, -06 White, -01 Polish Brass



Model	Input Voltage	Input Wattage	LED CT	CRI	Lumen(typ)	Dimension (OD x H)	Energy Star
DC010D-2G-9W-xxxxK	120V	9W		> 80	900	10.4" x 4.2"	YES
DC010D-2G-11W-xxxxK	120V	11W		> 80	1000	10.4" x 4.2"	YES
DC010D-2G-xxxxK	120V	18W		> 80	1340	10.4" x 4.2"	--
DC012D-2G-9W-xxxxK	120V	9W		> 80	880	11.8" x 4.2"	YES
DC012D-2G-11W-xxxxK	120V	11W	3000K /	> 80	1030	11.8" x 4.2"	YES
DC012D-2G-xxxxK	120V	18W	3500K /	> 80	1430	11.8" x 4.2"	YES
DC014D-2G-xxxxK	120V ~ 277V	23W	4000K /	> 80	2267	14.5" x 4.6"	YES
DC016D-2G-xxxxK	120V ~ 277V	28W	5000K	> 80	2600	16.0" x 4.9"	YES
DC018D-2G-xxxxK	120V ~ 277V	35W		> 80	3364	17.8" x 4.9"	YES
DC021D-2G-xxxxK	120V ~ 277V	40W		> 80	3500	20.5" x 5.0"	YES
DC238D-xxxxK	120V ~ 277V	40W		> 80	3450	24.1" x 5.0"	YES

* Lumen (typ): Tested with 3000K CT

* Color Temperature Option (-xxxxK): 3000K, 3500K, 4000K, 5000K

LED CEILING FIXTURE - TYPE D



***** Built-in Emergency Lighting *****
 ***** Bi-Level Lighting *****



EMERGENCY BACK UP MODELS

Model	Input Voltage	Input Wattage	LED CT	CRI	Lumen(typ)	Dimension (OD x H)	Energy Star
DC012D-2G-D-xxxxK-EM	120V	18W		> 80	1430	11.8" x 4.5"	YES
DC014D-2G-D-xxxxK-EM	120V ~ 277V	23W	3000K/ 3500K/	> 80	2267	14.5" x 5.0"	YES
DC016D-2G-D-xxxxK-EM	120V ~ 277V	28W	4000K/ 5000K	> 80	2600	16.0" x 5.4"	YES
DC018D-2G-D-xxxxK-EM	120V ~ 277V	35W		> 80	3364	17.8" x 5.4"	YES

BI-LEVEL LIGHTS - WITH BUILT-IN HIGH FREQUENCY SENSOR

Model	Input Voltage	Input Wattage	LED CT	CRI	Lumen(typ)	Dimension (OD x H)	Energy Star
DC012D-2G-D-xxxxK-BI	120V	18W		> 80	1430	11.8" x 4.5"	YES
DC014D-2G-D-xxxxK-BI	120V ~ 277V	23W	3000K/ 3500K/	> 80	2267	14.5" x 5.0"	YES
DC016D-2G-D-xxxxK-BI	120V ~ 277V	28W	4000K/ 5000K	> 80	2600	16.0" x 5.4"	YES
DC018D-2G-D-xxxxK-BI	120V ~ 277V	35W		> 80	3364	17.8" x 5.4"	YES

BI-LEVEL LIGHTS WITH EMERGENCY BACK UP

Model	Input Voltage	Input Wattage	LED CT	CRI	Lumen(typ)	Dimension (OD x H)	Energy Star
DC012D-2G-D-xxxxK-EM-BI	120V	18W		> 80	1430	11.8" x 4.5"	YES
DC014D-2G-D-xxxxK-EM-BI	120V ~ 277V	23W	3000K/ 3500K/	> 80	2267	14.5" x 5.0"	YES
DC016D-2G-D-xxxxK-EM-BI	120V ~ 277V	28W	4000K/ 5000K	> 80	2600	16.0" x 5.4"	YES
DC018D-2G-D-xxxxK-EM-BI	120V ~ 277V	35W		> 80	3364	17.8" x 5.4"	YES

* -BI : High Frequency Motion Sensor for Bi-level lighting
 * -HFSR : High Frequency Motion Sensor for on-off control only

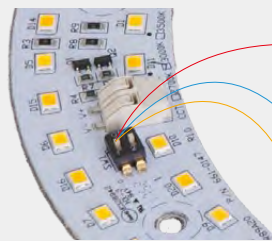
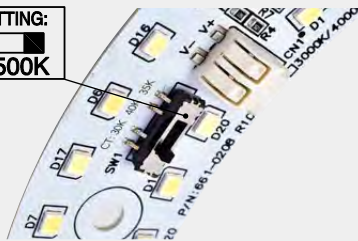
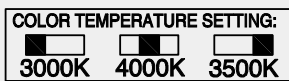
MULTIPLE COLOR TEMPERATURE (MCT) LED CEILING FIXTURE

New Released!

All in One! 3000K or 3500K or 4000K

Get Preferable Fixture Color Temperature by
Slide Switch or Dip Switch on LED Board

* Electronic Switch: Patent Pending



Turn switch 2 to ON for 3000K

Turn switch 1 to ON for 4000K

Turn switch 1 and 2 to ON for 3500K

* Color Temperature (MCT model): 3000K or 3500K or 4000K

Model	Input Voltage	Input Wattage	Lumen(typ)	Finish	Shade	Dimension (OD x H)	Energy Star
DC010D-2G-MCT	120V	18W	1340	Satin Nickel	Acrylic	10.0" x 4.2"	--
DC012D-2G-MCT	120V	18W	1430	Satin Nickel	Acrylic	11.8" x 4.2"	YES
DC014D-2G-MCT	120V ~ 277V	24W	2267	Satin Nickel	Acrylic	14.5" x 4.6"	YES
DC016D-2G-MCT	120V ~ 277V	28W	2600	Satin Nickel	Acrylic	16.0" x 4.9"	YES
DC018D-2G-MCT	120V ~ 277V	35W	3364	Satin Nickel	Acrylic	17.8" x 4.9"	YES
DC021D-2G-MCT	120V ~ 277V	40W	3500	Satin Nickel	Acrylic	20.5" x 5.0"	YES
DC238D-2G-MCT	120V ~ 277V	40W	3450	Satin Nickel	Acrylic	24.1" x 5.0"	YES

* Lumen (typ): Tested with 3000K CT

* Finish Option: -62 Satin Nickel, -30 Oil Rubbed Bronze, -06 White, -01 Polish Brass

LED CEILING FIXTURE - JA8

CEC LISTED - MEETS T24 JA8 - CRI >90

- * Housing: Die-formed cold rolled steel
- * Shade: High transmission acrylic creates excellent light distribution and uniformity
- * LED Driver: 120V triac dimming type or 120V ~ 277V, 0 ~ 10V dimming type
- * Min. Dimming level: 3%
- * High Power Factor: >0.98
- * Low THD: < 10%
- * LM80, TM21 - 60,000 hours min rating
- * LED CRI > 90 per JA8 standard
- * Flicker Free: Meets JA10 standard
- * Certification: ETL / cETL, CEC listed
- * 5 years warranty on driver and LED module
- * Finish: -62 Satin Nickel, -30 Oil Rubbed Bronze



DC010D/DC012D/DC014D/DC016D



DC032D



2-0247D

Model	Input Voltage	Input Wattage	LED CT/ CRI	Lumen(typ)	Dimming	Dimension (OD x H)
DC010D-2G-11W(JA8)	120V	11W	3000K / >90	850	Triac	10.4" x 4.2"
DC010D-2G(JA8)	120V	18W	3000K / >90	1200	Triac	10.4" x 4.2"
DC012D-2G(JA8)	120V	18W	3000K / >90	1310	Triac	11.8" x 4.2"
DC014D-2G(JA8)	120V ~ 277V	24W	3000K / >90	2000	0-10V	14.5" x 4.6"
DC016D-2G(JA8)	120V ~ 277V	30W	3000K / >90	2300	0-10V	16.0" x 4.9"
DC032D(JA8)	120V ~ 277V	48W	3000K / >90	3800	0-10V	32.3"L x 18.1"W x 4.3"H
2-0247D(JA8)	120V ~ 277V	38W	3000K / >90	3280	0-10V	18.9" x 4.5"

FLUORESCENT CEILING FIXTURE

- * Housing: Die-formed cold-rolled steel
- * Shade: Opal Acrylic
- * Certification: UL / cUL
- * Finish Option: -62 Satin Nickel, -30 Oil Rubbed Bronze, -06 White, -01 Polish Brass
- * GU24 CFL Bulb CT Option - 2700K , 4000K
- * Option: GU24 LED bulb, 9W, 800 lumen, 3000K or 4000K



GU24 CFL TYPE

Model	Input Voltage	Finish	Shade	Lamp	Dimension (OD x H)	Energy Star
DC010PG-118-62	120V	Satin Nickel	Acrylic	1 x 18W GU24	10.4" x 3.3"	--
DC012PG-123-62	120V	Satin Nickel	Acrylic	1 x 23W GU24	11.8" x 3.3"	--
DC014PG-213-62	120V	Satin Nickel	Acrylic	2 x 13W GU24	14.5" x 4.0"	--
DC014PG-218-62	120V	Satin Nickel	Acrylic	2 x 18W GU24	14.5" x 4.0"	--
DC014PG-223-62	120V	Satin Nickel	Acrylic	2 x 23W GU24	14.5" x 4.0"	--
DC016PG-218-62	120V	Satin Nickel	Acrylic	2 x 18W GU24	16.0" x 4.4"	--
DC018PG-223-62	120V	Satin Nickel	Acrylic	2 x 23W GU24	17.8" x 4.4"	--
DC018PG-318-62	120V	Satin Nickel	Acrylic	3 x 18W GU24	17.8" x 4.4"	--
DC238PG-423-62	120V	Satin Nickel	Acrylic	4 x 23W GU24	24.1" x 5.0"	--

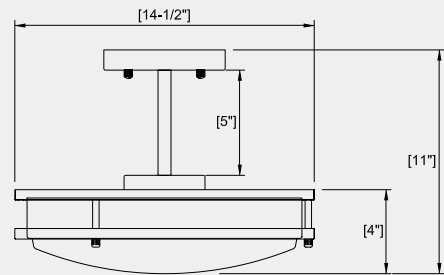
T9 CIRCLINE LAMP TYPE / QUAD LAMP

Model	Input Voltage	Finish	Shade	Lamp	Dimension (OD x H)	Energy Star
DC010-122-62	120V	Satin Nickel	Acrylic	1 x 22W T9 Cir.	10.4" x 3.3"	--
DC012-122-62	120V	Satin Nickel	Acrylic	1 x 22W T9 Cir.	11.8" x 3.3"	--
DC014-132-62	120V	Satin Nickel	Acrylic	1 x 32W T9 Cir.	14.5" x 4.0"	--
DC016-132-62	120V	Satin Nickel	Acrylic	1 x 32W T9 Cir.	16.0" x 4.4"	--
DC018-2232-62	120V	Satin Nickel	Acrylic	22W+32W T9 Cir.	17.8" x 4.4"	--
DC014-218-HPF-62	120V ~ 277V	Satin Nickel	Acrylic	2 x 18W Quad	14.5" x 4.0"	--
DC016-218-HPF-62	120V ~ 277V	Satin Nickel	Acrylic	2 x 18W Quad	16.0" x 4.4"	--
DC018-226-HPF-62	120V ~ 277V	Satin Nickel	Acrylic	2 x 26W Quad	17.8" x 4.4"	--
DC238-418-HPF-62	120V ~ 277V	Satin Nickel	Acrylic	4 x 18W Quad	24.1" x 5.0"	--

PENDANT



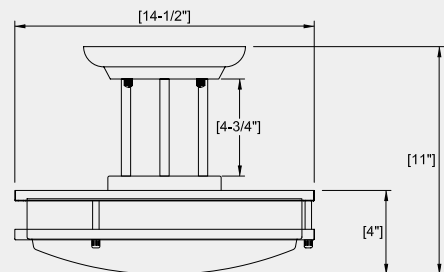
PENDANT TYPE, -PDA



Order Code example:
DC014D-2G-PDA-xxxxK
DC014PG-PDA-xxxxK



PENDANT TYPE, -PDB



Order Code example:
DC014D-2G-PDB-xxxxK
DC014PG-PDB-xxxxK

LED CEILING FIXTURE & PENDANT



- * Housing: Die-formed cold-rolled steel
- * Shade: High transmission acrylic creates excellent light distribution and uniformity
- * LED: High efficiency, high CRI, binned and mixed to reach uniform light
- * High power factor, low THD
- * 5 years warranty on driver and LED module
- * Certification: ETL / cETL, Energy Star
- * Finish Option: -62 Satin Nickel, -30 Oil Rubbed Bronze, -06 White, -01 Polish Brass



TYPE A



TYPE A, -PDA



TYPE C



TYPE C, -PDA

Model	Input Voltage	Input Wattage	LED CT	CRI	Lumen (typ)	Dimension (OD x H)	Energy Star
DC014D-2G-A-xxxxK	120V ~ 277V	23W		> 80	1980	14.8" x 4.6"	YES
DC018D-2G-A-xxxxK	120V ~ 277V	35W	3000K/	> 80	3100	17.8" x 4.8"	YES
DC014D-2G-A-PDA-xxxxK	120V ~ 277V	23W	3500K/	> 80	1980	14.8" x 11.7"	YES
DC018D-2G-A-PDA-xxxxK	120V ~ 277V	35W	4000K/	> 80	3100	17.8" x 11.9"	YES
DC018D-2G-C-xxxxK	120V ~ 277V	35W	5000K	> 80	2800	17.8" x 5.0"	YES
DC018D-2G-C-PDA-xxxxK	120V ~ 277V	35W		> 80	2800	17.8" x 12.0"	YES

* Lumen (typ): Tested with 3000K CT

* Color Temperature Option (-xxxxK): 3000K, 3500K, 4000K, 5000K

LED CEILING FIXTURE & PENDANT - TYPE B



- * Housing: Die-formed cold-rolled steel
- * Shade: High transmission acrylic creates excellent light distribution and uniformity
- * LED: High efficiency, high CRI, binned and mixed to reach uniform light
- * High power factor, low THD
- * 5 years warranty on driver and LED module
- * Certification: ETL / cETL, Energy Star
- * Finish Option: -62 Satin Nickel, -30 Oil Rubbed Bronze, -06 White, -01 Polish Brass



LED TYPE

Model	Input Voltage	Input Wattage	LED CT	CRI	Lumen(typ)	Dimension (OD x H)	Energy Star
DC012D-2G-B-xxxxK	120V	18W	3000K/	> 80	1340	12.5" x 3.8"	YES
DC014D-2G-B-xxxxK	120V ~ 277V	23W	3500K/	> 80	2150	15.0" x 3.8"	YES
DC016D-2G-B-xxxxK	120V ~ 277V	28W	4000K/	> 80	2600	16.6" x 4.1"	YES
DC018D-2G-B-xxxxK	120V ~ 277V	35W	5000K	> 80	3250	18.4" x 4.1"	YES

PENDANT - LED TYPE

Model	Input Voltage	Input Wattage	LED CT	CRI	Lumen(typ)	Dimension (OD x H)	Energy Star
DC012D-2G-B-PDA-xxxxK	120V	18W	3000K/	> 80	1340	12.5" x 10.8"	YES
DC014D-2G-B-PDA-xxxxK	120V ~ 277V	23W	3500K/	> 80	2150	15.0" x 10.8"	YES
DC016D-2G-B-PDA-xxxxK	120V ~ 277V	28W	4000K/	> 80	2600	16.6" x 11.1"	YES
DC018D-2G-B-PDA-xxxxK	120V ~ 277V	35W	5000K	> 80	3250	18.4" x 11.1"	YES

- * Lumen (typ): Tested with 3000K CT
- * Color Temperature Option (-xxxxK): 3000K, 3500K, 4000K, 5000K
- * Available on MCT

LED CEILING FIXTURE

- * Housing: Die-formed cold-rolled steel
- * Shade: High transmission acrylic creates excellent light distribution and uniformity
- * LED: High efficiency, high CRI, binned and mixed to reach uniform light
- * High power factor, low THD
- * 5 years warranty on driver and LED module
- * Certification: ETL / cETL
- * Color Temperature Option (-xxxxK): 3000K, 3500K, 4000K, 5000K
- * Finish Option: -62 Satin Nickel, -30 Oil Rubbed Bronze



Model	Input Voltage	Input Wattage	LED CT	CRI	Lumen (typ)	Dimension (OD x H)	Energy Star
DC236D-xxxxK	120V ~ 277V	24W	3000K/	> 80	1800	14.8" x 4.0"	--
DC235D-xxxxK	120V ~ 277V	28W	3500K/ 4000K/	> 80	2100	16.5" x 4.5"	--
DC022D-xxxxK	120V ~ 277V	35W	5000K	> 80	2650	19.0" x 4.5"	--

* Lumen (typ): Tested with 3000K CT

***New Low Profile Design**



Model	Input Voltage	Input Wattage	LED CT	CRI	Lumen (typ)	Dimension (OD x H)
DC336D-xxxxK	120V ~ 277V	17W	3000K/3500K/	> 80	1100	14.0" x 2.5"
DC335D-xxxxK	120V ~ 277V	23W	4000K/5000K	> 80	1500	16.0" x 2.5"

* Lumen (typ): Tested with 3000K CT

LED CEILING FIXTURE



- * Housing: Die-formed cold-rolled steel
- * Shade: Diffused glass shade creates excellent light distribution and uniformity
- * LED: High efficiency, high CRI, binned and mixed to reach uniform light
- * High power factor, low THD
- * 5 years warranty on driver and LED module
- * Certification: ETL / cETL, Energy Star
- * Finish Option: -62 Satin Nickel, -30 Oil Rubbed Bronze



DC1508D



DC1505D

Model	Input Voltage	Input Wattage	LED CT/ CRI	Lumen(typ)	Dimension (L x W x H)	Finish	Energy Star
DC1505D-3000K	120V ~ 277V	21W	3000K / 80	1700	13.0" x 13.0" x 3.5"	Satin Nickel	YES
DC1505D-4000K	120V ~ 277V	21W	4000K / 80	1785	13.0" x 13.0" x 3.5"	Satin Nickel	YES
DC1508D-3000K	120V ~ 277V	21W	3000K / 80	2000	15.0"OD x 3.9"H	Satin Nickel	YES
DC1508D-4000K	120V ~ 277V	21W	4000K / 80	2100	15.0"OD x 3.9"H	Satin Nickel	YES

* More Color Temperature Option: 3500K, 5000K

LED CEILING FIXTURE & PENDANT



- * Housing: Brushed aluminum
- * Shade: Diffused glass shade creates excellent light distribution and uniformity
- * LED: High efficiency, high CRI, binned and mixed to reach uniform light
- * High power factor, low THD
- * 5 years warranty on driver and LED module
- * Certification: ETL / cETL, Energy Star
- * Finish Option: -30 Oil Rubbed Bronze



Model	Input Voltage	Input Wattage	LED CT	CRI	Lumen(typ)	Dimension (OD x H)	Energy Star
DC220D-xxxxK	120V	17W	3000K/	> 80	1320	10.5" x 2.6"	YES
DC221D-xxxxK	120V ~ 277V	23W	3500K/	> 80	1900	15.0" x 2.6"	YES
DC222D-xxxxK	120V ~ 277V	35W	4000K/	> 80	2670	19.0" x 2.6"	YES
DC221D-PD-xxxxK	120V ~ 277V	23W	5000K	> 80	1900	15.0" x H*	YES
DC222D-PD-xxxxK	120V ~ 277V	35W		> 80	2670	19.0" x H*	YES

* Lumen (typ): Tested with 3000K CT

* Color Temperature Option (-xxxxK): 3000K, 3500K, 4000K, 5000K

* Fixture height (H): adjustable by hanging cable up to 6.0 ft

LED CEILING FIXTURE



- * Housing: Die-formed cold-rolled steel
- * Shade: Diffused glass shade creates excellent light distribution and uniformity
- * LED: High efficiency, high CRI, binned and mixed to reach uniform light
- * High power factor, low THD
- * 5 years warranty on driver and LED module
- * Certification: ETL / cETL, Energy Star
- * Finish Option: -62 Satin Nickel, -30 Oil Rubbed Bronze



Model	Input Voltage	Input Wattage	LED CT	CRI	Finish	Lumen(typ)	Dimension (OD x H)	Energy Star
DC221D-A-xxxxK-62	120V ~ 277V	23W	3000K/	> 80	Satin Nickel	1900	16.5" x 2.8"	YES
DC222D-A-xxxxK-62	120V ~ 277V	35W	3500K/	> 80		2670	21.5" x 2.8"	YES
DC221D-A-xxxxK-30	120V ~ 277V	23W	4000K/	> 80	Oil Rubbed	1900	16.5" x 2.8"	YES
DC222D-A-xxxxK-30	120V ~ 277V	35W	5000K	> 80	Bronze	2670	21.5" x 2.8"	YES

* Lumen (typ): Tested with 3000K CT

* Color Temperature Option (-xxxxK): 3000K, 3500K, 4000K, 5000K

CEILING FIXTURE



- * Housing: Die-formed cold-rolled steel
- * Shade: High transmission acrylic creates excellent light distribution and uniformity
- * LED: High efficiency, high CRI, binned and mixed to reach uniform light
- * High power factor, low THD
- * 5 years warranty on driver and LED module
- * Certification: UL / cUL, ETL / cETL, Energy Star
- * Finish Option: -62 Satin Nickel, -30 Oil Rubbed Bronze

* **New Models: Multiple Color Temperature Model (MCT)**



LED TYPE

Model	Input Voltage	Input Wattage	LED CT	CRI	Lumen(typ)	Dimension (L x W x H)	Energy Star
DC028D-3000K	120V ~ 277V	35W	3000K/	> 80	3485	28.3" x 14.1" x 4.4"	YES
DC028D-4000K	120V ~ 277V	35W	3500K/	> 80	3660	28.3" x 14.1" x 4.4"	YES
DC032D-3000K	120V ~ 277V	46W	4000K/	> 80	4470	32.3" x 18.1" x 4.3"	YES
DC032D-4000K	120V ~ 277V	46W	5000K	> 80	4700	32.3" x 18.1" x 4.3"	YES

* Lumen (typ): Tested with 3000K CT

* Color Temperature Option (-xxxxK): 3000K, 3500K, 4000K, 5000K

MULTIPLE COLOR TEMPERATURE MODEL (MCT)

Model	Input Voltage	Input Wattage	LED CT	CRI	Lumen(typ)	Dimension (L x W x H)	Energy Star
DC032D-MCT	120V ~ 277V	46W	3000K/3500K/	> 80	4470	32.3" x 18.1" x 4.3"	YES
DC032D-MCT-28W	120V ~ 277V	28W	4000K	> 80	2720	32.3" x 18.1" x 4.3"	YES

* Lumen (typ): Tested with 3000K CT

CIRCLINE / T8 TYPE

Model	Input Voltage	Input Wattage	Shade	Lamp	Dimension (L x W x H)	Energy Star
DC032	120V	64W	Acrylic	2 x 32W T9 Cir.	32.3" x 18.1" x 4.3"	--
DC032-417 HPF	120V ~ 277V	68W	Acrylic	4 x F17T8, 17W	32.3" x 18.1" x 4.3"	--
DC028-317 HPF	120V ~ 277V	51W	Acrylic	3 x F17T8, 17W	28.3" x 14.1" x 4.4"	--

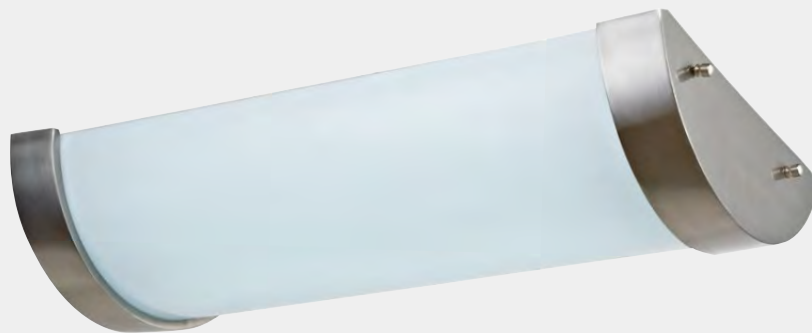
LINEAR CEILING FIXTURE



- * Housing: Die-formed cold-rolled steel
- * Shade: High transmission acrylic creates excellent light distribution and uniformity
- * LED: High efficiency, high CRI, binned and mixed to reach uniform light
- * High power factor, low THD
- * 5 years warranty on driver and LED module
- * Certification: UL / cUL, ETL / cETL, Energy Star
- * Finish Option: -62 Satin Nickel, -30 Oil Rubbed Bronze



FL1224D/FL1248D



FL1224D-A/FL1248D-A *TYPE A END CAP SATIN NICKEL OR OIL RUBBED BRONZE

LED TYPE

Model	Input Voltage	Input Wattage	CRI	LED CT	Lumen(typ)	Dimension (L x W x H)	Energy Star
FL1224D-3000K	120V ~ 277V	36W	> 80	3000K/	2850	24.2" x 11.5" x 4.4"	YES
FL1248D-3000K	120V ~ 277V	64W	> 80	3500K/	5200	48.3" x 11.5" x 4.4"	YES
FL1224D-A-3000K	120V ~ 277V	36W	> 80	4000K/	2850	24.2" x 11.5" x 4.4"	YES
FL1248D-A-3000K	120V ~ 277V	64W	> 80	5000K	5200	48.3" x 11.5" x 4.4"	YES

* Lumen (typ): Tested with 3000K CT

* Color Temperature Option (-xxxxK): 3000K, 3500K, 4000K, 5000K

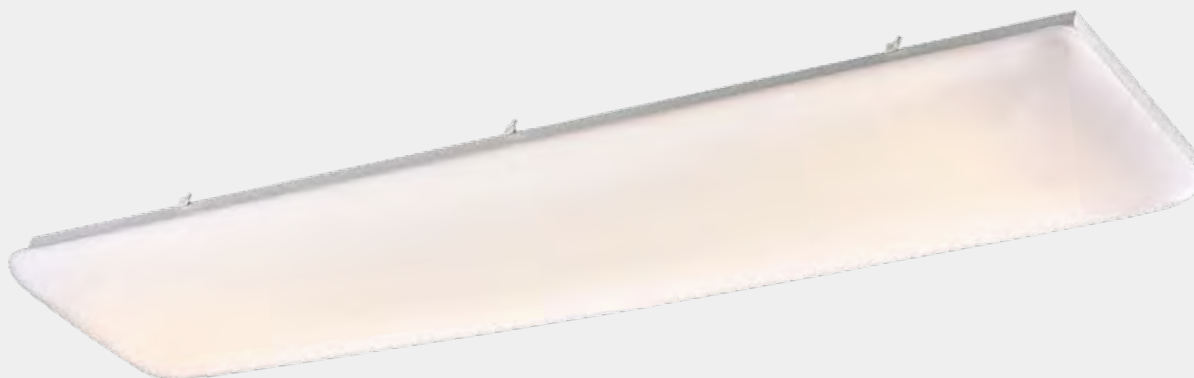
T8 TYPE

Model	Input Voltage	Input Wattage	Finish	Lamp	Dimension (L x W x H)	Energy Star
FL1224-62	120V	51W	Satin Nickel	3 x F17T8, 17W	24.2" x 11.5" x 4.4"	--
FL1248-62	120V	96W	Satin Nickel	3 x F32T8, 32W	48.3" x 11.5" x 4.4"	--
FL1224-A-62	120V	51W	Satin Nickel	3 x F17T8, 17W	24.2" x 11.5" x 4.4"	--
FL1248-A-62	120V	96W	Satin Nickel	3 x F32T8, 32W	48.3" x 11.5" x 4.4"	--

LED CEILING FIXTURE - CLOUD



- * Housing: Die-formed cold-rolled steel
- * Shade: High transmission acrylic creates excellent light distribution and uniformity
- * LED: High efficiency, high CRI, binned and mixed to reach uniform light
- * High power factor, low THD
- * 5 years warranty on driver and LED module
- * Certification: ETL / cETL, Energy Star



Model	Input Voltage	Input Wattage	LED CT/ CRI	Lumen(typ)	Dimension (L x W x H)	Energy Star
780CLD-3000K	120V ~ 277V	47W	3000K / 80	4000	48.6" x 9.5" x 4.3"	YES
780CLD-4000K	120V ~ 277V	47W	4000K / 80	4200	48.6" x 9.5" x 4.3"	YES
790CLD-3000K	120V ~ 277V	64W	3000K / 80	5150	48.8" x 12.6" x 4.3"	YES
790CLD-4000K	120V ~ 277V	64W	4000K / 80	5400	48.8" x 12.6" x 4.3"	YES

* More Color Temperature Option: 3500K, 5000K



Model	Input Voltage	Input Wattage	LED CT/ CRI	Lumen(typ)	Dimension (OD x H)	Energy Star
2-0249D-3000K	120V	48W	3000K / 80	3400	23.0" x 3.7"	--
2-0249D-4000K	120V	48W	4000K / 80	3600	23.0" x 3.7"	--

* More Color Temperature Option: 3500K, 5000K

LED CEILING FIXTURE



- * Housing: Die-formed cold-rolled steel
- * Shade: Frosted polycarbonate or acrylic creates excellent light distribution and uniformity
- * LED: High efficiency, high CRI, binned and mixed to reach uniform light
- * High power factor, low THD
- * 5 years warranty on driver and LED module
- * Certification: ETL / cETL, Energy Star
- * Finish Option: -30 Oil Rubbed Bronze



CM5-WH



CM5-ORB



C137 / C138



DC913 / DC916

Model	Input Voltage	Input Wattage	LED CT	CRI	Lumen (typ)	Finish/ Shade	Dimension (L x W x H)	Energy Star
CM5-06-xxxxK	120V ~ 277V	35W		> 80	3420	White / PC	13.0" x 13.0" x 3.6"	YES
CM5-30-xxxxK	120V ~ 277V	35W	3000K/	> 80	3420	ORB / PC	13.0" x 13.0" x 3.6"	YES
C137D-62-xxxxK	120V ~ 277V	18W	3500K/	> 80	1650		15.3" x 15.3" x 3.4"	YES
C138D-62-xxxxK	120V ~ 277V	35W	4000K/	> 80	2450	Satin Nickel /	19.3" x 19.3" x 3.8"	YES
DC913D-62-xxxxK	120V ~ 277V	21W	5000K	> 80	1750	Acrylic	13.0" x 13.0" x 5.1"	YES
DC916D-62-xxxxK	120V ~ 277V	35W		> 80	2900		16.0" x 16.0" x 5.4"	YES

* Lumen (typ): Tested with 3000K CT

* Color Temperature Option (-xxxxK): 3000K, 3500K, 4000K, 5000K

CEILING FIXTURE - SQUARE PUFF



- * Housing: Die-formed cold-rolled steel
- * Shade: High transmission acrylic creates excellent light distribution and uniformity
- * LED: High efficiency, high CRI, binned and mixed to reach uniform light
- * High power factor, low THD
- * 5 years warranty on driver and LED module
- * Certification: UL / cUL, ETL / cETL, Energy Star



LED TYPE

Model	Input Voltage	Input Wattage	LED CT	CRI	Lumen (typ)	Dimension (L x W x H)	Energy Star
2-0345D-xxxxK	120V	17W	3000K/ 3500K/	> 80	1590	11.0" x 11.0" x 3.2"	YES
2-0346D-xxxxK	120V ~ 277V	24W	4000K/ 5000K	> 80	2384	14.0" x 14.0" x 3.4"	YES
2-0347D-xxxxK	120V ~ 277V	35W		> 80	3250	19.0" x 19.0" x 3.4"	YES

* Lumen (typ): Tested with 3000K CT

* More Color Temperature Option: 3000K,3500K, 4000K, 5000K

GU24 CFL TYPE

Model	Input Voltage	Input Wattage	Shade	Lamp	Dimension (L x W x H)	Energy Star
2-0345PG-123	120V	23W	Opal Acrylic	1 x 23W GU24	11.0" x 11.0" x 3.2"	--
2-0346PG-213	120V	26W	Opal Acrylic	2 x 13W GU24	14.0" x 14.0" x 3.4"	--
2-0347PG-318	120V	54W	Opal Acrylic	3 x 18W GU24	19.0" x 19.0" x 3.4"	--

* GU24 Bulb CT Option: 2700K, 4000K

CEILING FIXTURE -ROUND PUFF



- * Housing: Die-formed cold-rolled steel
- * Shade: High transmission acrylic creates excellent light distribution and uniformity
- * LED: High efficiency, high CRI, binned and mixed to reach uniform light
- * High power factor, low THD
- * 5 years warranty on driver and LED module
- * Certification: UL / cUL, ETL / cETL, Energy Star



2-0245/2-0246/2-0247



TYPE A: DRUM TYPE

LED TYPE

Model	Input Voltage	Input Wattage	LED CT	CRI	Lumen (typ)	Dimension (OD x H)	Energy Star
2-0245D-9W-xxxxK	120V	9W		> 80	1000	11.0" x 4.3"	YES
2-0245D-xxxxK	120V	17W	3000K/	> 80	1600	11.0" x 4.3"	YES
2-0246D-xxxxK	120V ~ 277V	24W	3500K/	> 80	2560	14.0" x 4.6"	YES
2-0247D-xxxxK	120V ~ 277V	35W	4000K/	> 80	3280	18.9" x 4.6"	--
2-0245D-A-xxxxK	120V	17W	5000K	> 80	1600	11.0" x 3.3"	YES
2-0246D-A-xxxxK	120V ~ 277V	24W		> 80	2560	14.0" x 3.6"	YES

* Lumen (typ): Tested with 3000K CT

* Color Temperature Option (-xxxxK): 3000K, 3500K, 4000K, 5000K

GU24 CFL TYPE

Model	Input Voltage	Shade	Lamp	Dimension (OD x H)	Energy Star
2-0245PG-123	120V	Opal Acrylic	1 x 23W GU24	11.0" x 4.3"	--
2-0246PG-213	120V	Opal Acrylic	2 x 13W GU24	14.0" x 4.6"	--
2-0247-2232	120V	Opal Acrylic	22W+32W T9 Cir.	18.9" x 4.6"	--

* GU24 Bulb CT Option: 2700K, 4000K

LED CEILING FIXTURE - ROUND PUFF



***** Built-in Emergency Lighting ***** Bi-Level Lighting *****

- * Housing: Die-formed cold-rolled steel
- * Shade: High transmission acrylic creates excellent light distribution and uniformity
- * LED: High efficiency, high CRI, binned and mixed to reach uniform light
- * High power factor, low THD
- * 5 years warranty on driver and LED module
- * Certification: ETL / cETL, Energy Star



EMERGENCY BACK UP MODELS

Model	Input Voltage	Input Wattage	LED CT	CRI	Lumen (typ)	Dimension (OD x H)	Energy Star
2-0245D-A-xxxxK-EM	120V	17W	3000K	> 80	1600	11.0" x 4.7"	YES
2-0246D-A-xxxxK-EM	120V ~ 277V	24W	3000K	> 80	2560	14.0" x 4.9"	YES

BI-LEVEL LIGHTS - WITH BUILT-IN HIGH FREQUENCY SENSOR

Model	Input Voltage	Input Wattage	LED CT	CRI	Lumen (typ)	Dimension (OD x H)	Energy Star
2-0245D-A-xxxxK-BI	120V	17W	3000K	> 80	1600	11.0" x 4.7"	YES
2-0246D-A-xxxxK-BI	120V ~ 277V	24W	3000K	> 80	2560	14.0" x 4.9"	YES

BI-LEVEL LIGHTS WITH EMERGENCY BACK UP

Model	Input Voltage	Input Wattage	LED CT	CRI	Lumen (typ)	Dimension (OD x H)	Energy Star
2-0245D-A-xxxxK-BI-EM	120V	17W	3000K	> 80	1600	11.0" x 4.7"	YES
2-0246D-A-xxxxK-BI-EM	120V ~ 277V	24W	3000K	> 80	2560	14.0" x 4.9"	YES

* Lumen (typ): Tested with 3000K CT

* Color Temperature Option (-xxxxK): 3000K, 3500K, 4000K, 5000K

LED CEILING FIXTURE - DECO PUFF



- * Housing: Die-formed cold-rolled steel
- * Shade: High transmission acrylic creates excellent light distribution and uniformity
- * LED: High efficiency, high CRI, binned and mixed to reach uniform light
- * High power factor, low THD
- * 5 years warranty on driver and LED module
- * Certification: ETL / cETL, Energy Star



TYPE B



TYPE C

Model	Input Voltage	Input Wattage	LED CT	CRI	Lumen (typ)	Dimension (OD x H)	Energy Star
2-0245D-B-xxxxK	120V	17W		> 80	1600	11.0" x 3.7"	YES
2-0246D-B-xxxxK	120V ~ 277V	24W	3000K/	> 80	2560	14.0" x 3.9"	YES
2-0247D-B-xxxxK	120V ~ 277V	35W	3500K/	> 80	3280	18.9" x 3.9"	--
2-0245D-C-xxxxK	120V	17W	4000K/	> 80	1600	11.0" x 4.5"	YES
2-0246D-C-xxxxK	120V ~ 277V	24W	5000K	> 80	2560	14.0" x 4.7"	YES
2-0247D-C-xxxxK	120V ~ 277V	35W		> 80	3280	18.9" x 4.7"	--

* Lumen (typ): Tested with 3000K CT

* Color Temperature Option (-xxxxK): 3000K, 3500K, 4000K, 5000K

CEILING FIXTURE -DECO PUFF

- * Housing: Die-formed cold-rolled steel
- * Shade: High transmission acrylic creates excellent light distribution and uniformity
- * LED: High efficiency, high CRI, binned and mixed to reach uniform light
- * High power factor, low THD
- * 5 years warranty on driver and LED module
- * Certification: UL / cUL, ETL / cETL



C091



DC117/DC118

LED TYPE

Model	Input Voltage	Input Wattage	LED CT/ CRI	Lumen (typ)	Shade	Dimension (OD x H)	Energy Star
C091D-3000K	120V ~ 277V	28W	3000K / 80	2700	Acrylic, Opal	16.0" x 4.6"	--
C091D-4000K	120V ~ 277V	28W	4000K / 80	2830	Acrylic, Opal	16.0" x 4.6"	--

* More Color Temperature Option: 3500K, 5000K

GU24 CFL TYPE

Model	Input Voltage	Finish	Shade	Lamp	Dimension (OD x H)	Energy Star
DC118PG-218	120V	Satin Nickel	Acrylic	2 x 18W GU24	14.0" x 4.0"	--
DC117PG-318	120V	Satin Nickel	Acrylic	3 x 18W GU24	19.5" x 4.0"	--

* GU24 Bulb CT Option: 2700K, 4000K

LED CEILING FIXTURE



- * Housing: Die-formed cold-rolled steel
- * Shade: High transmission acrylic creates excellent light distribution and uniformity
- * Dimming: Triac dimming or 0-10V dimming
- * High power factor, low THD
- * LED CRI > 80
- * Certification: ETL / cETL, Energy Star
- * 5 years warranty on driver and LED module



Model	Input Voltage	Input Wattage	Dimming	LED CT	CRI	Lumen (typ)	Dimension (OD x H)	Energy Star
1027D-xxxxK	120V	12W	Triac	3000K/ 3500K/	> 80	780	11.4" x 2.5"	--
1028D-xxxxK	120V	17W	Triac	4000K/ 5000K	> 80	1100	14.5" x 2.5"	--
1028D1-xxxxK	120V ~ 277V	17W	0-10V	5000K	> 80	1100	14.5" x 2.5"	--

- * Finish Option: -06 White, -30 Oil Rubbed Bronze, -62 Satin Nickel
- * Color Temperature Option (-xxxxK): 3000K, 3500K, 4000K, 5000K
- * Lumen (typ): Tested with 3000K CT
- * Driver Model 1027: Driver on board, 120V only



C023-A / C034-A

Model	Input Voltage	Input Wattage	LED CT	CRI	Housing/ Shade	Lumen (typ)	Dimension (OD x H)	Energy Star
C023-65-A-xxxxK	120V ~ 277V	23W	3000K/ 3500K/	> 80	PC	2100	14.3" x 5.7"	YES
C034-65-A-xxxxK	120V ~ 277V	34W	4000K/ 5000K	> 80	PC	2380	17.7" x 5.7"	YES

- * Lumen (typ): Tested with 3000K CT
- * Color Temperature Option (-xxxxK): 3000K, 3500K, 4000K, 5000K
- * Wet location rated: Ideal for high humidity environment applications

CEILING FIXTURE



- * Housing: Die-formed cold-rolled steel
- * Shade: Frosted Glass or Alabaster Glass
- * High power factor, low THD
- * LED CRI > 80
- * 5 years warranty on driver and LED module
- * Certification: ETL / cETL, Energy Star
- * Finish Option: -06 White, -30 Oil Rubbed Bronze



1012D/1014D



1015D



1015D-B

LED TYPE

Model	Input Voltage	Input Wattage	LED CT / CRI	Lumen (typ)	Finish	Dimension (OD x H)	Energy Star
1012D-12W-3000K-62	120V	12W	3000K / > 80	1000	Satin Nickel	11.4" x 5.2"	YES
1012D-3000K-62	120V	17W	3000K / > 80	1300	Satin Nickel	11.4" x 5.2"	YES
1015D-3000K-62	120V	18W	3000K / > 80	1520	Satin Nickel	13.5" x 7.4"	YES
1015D-B-3000K-62	120V	18W	3000K / > 80	1380	Satin Nickel	14.0" x 6.0"	YES

- * Lumen (typ): Tested with 3000K CT/ Frosted Glass
- * More Color Temperature Option: 3500K,4000K,5000K

GU24 CFL TYPE

Model	Input Voltage	Input Wattage	Lamp (CFL)	Shade	Finish	Dimension (OD x H)	Energy Star
1012PG-123-62	120V	23W	1 x 23W	Alabaster	Satin Nickel	11.4" x 5.2"	--
1014PG-213-62	120V	26W	2 x 13W		Satin Nickel	13.0" x 6.5"	--
1015PG-218-62	120V	36W	2 x 18W	Glass	Satin Nickel	13.0" x 6.5"	--
1015PG-223-62	120V	46W	2 x 23W		Satin Nickel	13.0" x 6.5"	--

- * GU24 Bulb CT Option: 2700K, 4000K
- * Shade: - FG: Frosted Glass, - AG: Alabaster Glass
- * Dimension: Frosted Glass / 13.5" x 7.4" , Alabaster Glass / 13.5" x 6.5"

CEILING FIXTURE



***** Built-in Emergency Lighting *****

***** Bi-Level Lighting *****

- * Housing: Die-formed cold-rolled steel
- * LED: High efficiency, high CRI, binned and mixed to reach uniform light
- * Dimming: Triac dimming or 0-10V dimming
- * High power factor, low THD
- * 5 years warranty on driver and LED module
- * Certification: UL / cUL, ETL / cETL, Energy Star
- * Finish Option: -06 White, -30 Oil Rubbed Bronze, -62 Satin Nickel



1018 WHITE



1018 OIL RUBBED BRONZE



1018 SATIN NICKEL

LED TYPE & EMERGENCY BACK UP MODELS

Model	Input Voltage	Input Wattage	LED CT	Lumen (typ)	CRI	Dimension (OD x H)	Energy Star
1018D-3000K	120V ~ 277V	23W	3000K	2000	> 80	15.2" x 6.7"	YES
1018D-3000K-EM	120V ~ 277V	23W	3000K	2000	> 80	15.2" x 6.7"	YES

BI-LEVEL LIGHTS & EMERGENCY BACK UP MODELS

Model	Input Voltage	Input Wattage	LED CT	Lumen (typ)	CRI	Dimension (OD x H)	Energy Star
1018D-3000K-BI	120V ~ 277V	23W	3000K	2000	> 80	15.2" x 6.7"	YES
1018D-3000K-EM-BI	120V ~ 277V	23W	3000K	2000	> 80	15.2" x 6.7"	YES

- * Lumen (typ): Tested with 3000K CT/ Frosted Glass
- * More Color Temperature Option: 3500K,4000K,5000K
- * Shade: Frosted Swirl Glass

GU24 CFL TYPE

Model	Input Voltage	Finish	Shade	Lamp	Dimension (OD x H)
1018PG-223-06	120V	White	Frosted Swirl Glass	2 x 23W GU24	15.2" x 6.7"
1018PG-223-62	120V	Satin Nickel		2 x 23W GU24	15.2" x 6.7"
1018PG-223-30	120V	ORB		2 x 23W GU24	15.2" x 6.7"

- * GU24 Bulb CT Option: 2700K, 4000K
- * Finish Option: -06 White, -30 Oil Rubbed Bronze, -62 Satin Nickel

CEILING FIXTURE



- * Housing: Die-formed cold-rolled steel
- * Shade: Alabaster Glass
- * High power factor, low THD
- * 5 years warranty on driver and LED module
- * Certification: UL / cUL, ETL / cETL, Energy Star
- * Finish Option: -06 White, -30 Oil Rubbed Bronze, -62 Satin Nickel



1011/1010/1009



1019



1007

LED TYPE

Model	Input Voltage	Input Wattage	LED CT	CRI	Lumen (typ)	Finish	Dimension (OD x H)	Energy Star
1010D-3000K-62	120V	18W	3000K	> 80	1400	Satin Nickel	13.0" x 4.3"	YES
1009D-3000K-62	120V ~ 277V	23W	3000K	> 80	1600	Satin Nickel	16.0" x 4.8"	--
1019D-3000K	120V ~ 277V	18W	3000K	> 80	1400	Satin Nickel	13.0" x 6.1"	YES

* Lumen (typ): Tested with 3000K CT

* More Color Temperature Option: 3500K, 4000K, 5000K

GU24 CFL TYPE

Model	Input Voltage	Finish	Shade	Lamp	Dimension (OD x H)	Energy Star
1007PG-123-62	120V	Satin Nickel	Alabaster Glass	1 x 23W GU24	12.0" x 5.5"	--
1011PG-123-62	120V	Satin Nickel	Alabaster Glass	1 x 23W GU24	10.3" x 4.3"	--
1010PG-213-62	120V	Satin Nickel	Alabaster Glass	2 x 13W GU24	13.0" x 4.3"	--
1010PG-223-62	120V	Satin Nickel	Alabaster Glass	2 x 23W GU24	13.0" x 4.3"	--
1009PG-218-62	120V	Satin Nickel	Alabaster Glass	2 x 18W GU24	16.0" x 4.8"	--

* GU24 Bulb CT Option: 2700K, 4000K

CEILING FIXTURE



- * Housing: Die-formed cold-rolled steel
- * Shade: High transmission acrylic or Alabaster glass creates excellent light distribution and uniformity
- * LED: High efficiency, high CRI, binned and mixed to reach uniform light
- * LED CRI > 80
- * 5 years warranty on driver and LED module
- * Certification: UL / cUL, ETL / cETL, Energy Star



LED TYPE

Model	Input Voltage	Input Wattage	LED CT / CRI	Lumen (typ)	Finish	Dimension (OD x H)	Energy Star
1130D-62-xxxxK	120V	17W	3000K / > 80	1280	Satin Nickel	12.0" x 4.6"	YES
1132D-62-xxxxK	120V ~ 277V	17W	3000K / > 80	1600	Satin Nickel	14.5" x 5.4"	YES

- * Lumen (typ): Tested with 3000K CT
- * More Color Temperature Option: 3500K, 4000K, 5000K
- * Finish Option: -62 Satin Nickel, -01 Polish Brass, -06 White, -30 Oil Rubbed Bronze

GU24 CFL TYPE

Model	Input Voltage	Input Wattage	Finish	Lamp	Dimension (OD x H)	Energy Star
1130PG-213-62	120V	26W	Satin Nickel	2 x 13W GU24	12.0" x 4.6"	--
1132PG-218-62	120V	36W	Satin Nickel	2 x 18W GU24	14.5" x 5.4"	--

- * GU24 Bulb CT Option: 2700K, 4000K
- * Finish Option: -62 Satin Nickel, -01 Polish Brass, -06 White, -30 Oil Rubbed Bronze

CEILING FIXTURE & PENDANT



- * Housing: Die-formed cold-rolled steel
- * Shade: High transmission acrylic front panel creates excellent light distribution and uniformity
- * Side shade: semi-clear decorative fibre linen
- * LED: High efficiency, high CRI, binned and mixed to reach uniform light
- * 5 years warranty on driver and LED module
- * Certification: UL /cUL, ETL / cETL, Energy Star

Available on Multiple Color Temperature (MCT)

All in One! **3000K** or **3500K** or **4000K**



LED TYPE

Model	Input Voltage	Input Wattage	LED CT / CRI	Lumen (typ)	Dimension (OD x H)	Energy Star
DC312D-xxxxK	120V ~ 277V	18W	3000K / > 80	1200	11.7" x 5.0"	YES
DC314D-xxxxK	120V ~ 277V	24W	3000K / > 80	1850	14.5" x 5.0"	YES
DC318D-xxxxK	120V ~ 277V	35W	3000K / > 80	3000	17.7" x 5.0"	YES
DC312D-MCT	120V ~ 277V	18W	3000K / > 80	1200	11.7" x 5.0"	YES
DC314D-MCT	120V ~ 277V	24W	3000K / > 80	1850	14.5" x 5.0"	YES
DC316D-MCT	120V ~ 277V	28W	3000K / > 80	2300	16.0" x 5.0"	YES
DC318D-MCT	120V ~ 277V	35W	3000K / > 80	3000	17.7" x 5.0"	YES
DC312D-PD-xxxxK	120V ~ 277V	18W	3000K / > 80	1200	11.7" x 12.0"	YES
DC314D-PD-xxxxK	120V ~ 277V	24W	3000K / > 80	1850	14.5" x 12.0"	YES
DC318D-PD-xxxxK	120V ~ 277V	35W	3000K / > 80	3000	17.7" x 12.0"	YES

* Color Temperature Option (-xxxxK): 3000K, 3500K, 4000K, 5000K

* Lumen (typ): Tested with 3000K CT

GU24 CFL TYPE

Model	Input Voltage	Input Wattage	Shade	Lamp	Dimension (OD x H)
DC312PG-123	120V	23W	Acrylic / Linen	1 x 23W GU24	11.7" x 5.0"
DC314PG-218	120V	36W	Acrylic / Linen	2 x 18W GU24	14.5" x 5.0"
DC318PG-318	120V	54W	Acrylic / Linen	3 x 18W GU24	17.7" x 5.0"
DC314PG-PD-218	120V	36W	Acrylic / Linen	2 x 18W GU24	14.5" x 12.0"
DC318PG-PD-318	120V	54W	Acrylic / Linen	3 x 18W GU24	17.7" x 12.0"

* GU24 Bulb CT Option: 2700K, 4000K

* GU24 Bulb option: LED bulb 9W, 3000K or 4000K, 120V or 120V~277V,800lm.

CEILING FIXTURE & PENDANT

- * Housing: Die-formed cold-rolled steel
- * Shade: High transmission acrylic front panel creates excellent light distribution and uniformity
- * Side shade: semi-clear white decorative fibre linen
- * LED: High efficiency, high CRI, binned and mixed to reach uniform light
- * LED CRI > 80
- * 5 years warranty on driver and LED module
- * Certification: UL /cUL, ETL / cETL



LED TYPE

Model	Input Voltage	Input Wattage	LED CT / CRI	Lumen (typ)	Dimension (OD x H)	Shade
DC612D-3000K	120V ~ 277V	18W	3000K / > 80	1200	12.0" x 5.0"	Acrylic / Linen
DC614D-3000K	120V ~ 277V	24W	3000K / > 80	1830	15.4" x 5.2"	Acrylic / Linen
DC618D-3000K	120V ~ 277V	35W	3000K / > 80	2940	18.5" x 5.7"	Acrylic / Linen
DC614D-PD-3000K	120V ~ 277V	24W	3000K / > 80	1830	15.4" x 12.2"	Acrylic / Linen
DC618D-PD-3000K	120V ~ 277V	35W	3000K / > 80	2940	18.5" x 12.7"	Acrylic / Linen

- * Color Temperature Option (-xxxxK): 3000K, 3500K, 4000K, 5000K
- * Lumen (typ): Tested with 3000K CT

GU24 CFL TYPE

Model	Input Voltage	Input Wattage	Shade	Lamp	Dimension (OD x H)
DC614PG-218	120V	36W	Acrylic / Linen	2 x 18W GU24	15.4" x 5.2"
DC618PG-318	120V	54W	Acrylic / Linen	3 x 18W GU24	18.5" x 5.7"
DC614PG-PD-218	120V	36W	Acrylic / Linen	2 x 18W GU24	15.4" x 12.2"
DC618PG-PD-318	120V	54W	Acrylic / Linen	3 x 18W GU24	18.5" x 12.7"

- * GU24 Bulb CT Option: 2700K, 4000K
- * GU24 Bulb option: LED bulb 9W, 3000K or 4000K, 120V or 120V~277V,800lm.

CEILING FIXTURE & PENDANT

- * Housing: Die-formed cold-rolled steel
- * Shade: High transmission acrylic front panel creates excellent light distribution and uniformity
- * Side shade: semi-clear white decorative fibre linen
- * LED: High efficiency, high CRI, binned and mixed to reach uniform light
- * LED CRI > 80
- * 5 years warranty on driver and LED module
- * Certification: UL /cUL, ETL / cETL



LED TYPE

Model	Input Voltage	Input Wattage	LED CT / CRI	Lumen (typ)	Dimension (OD x H)
DC614D-A-xxxxK	120V ~ 277V	24W	3000K / > 80	1830	17.0" x 5.4"
DC618D-A-xxxxK	120V ~ 277V	35W	3000K / > 80	2940	20.1" x 5.9"
DC614D-PD-A-xxxxK	120V ~ 277V	24W	3000K / > 80	1830	17.0" x 12.4"
DC618D-PD-A-xxxxK	120V ~ 277V	35W	3000K / > 80	2940	20.1" x 12.9"

- * Color Temperature Option (-xxxxK): 3000K, 3500K, 4000K, 5000K
- * Lumen (typ): Tested with 3000K CT

GU24 CFL TYPE

Model	Input Voltage	Input Wattage	Shade	Lamp	Dimension (OD x H)
DC614PG-A-218	120V	36W	Acrylic / Linen	2 x 18W GU24	17.0" x 5.4"
DC618PG-A-318	120V	54W	Acrylic / Linen	3 x 18W GU24	20.1" x 5.9"
DC614PG-A-PD-218	120V	36W	Acrylic / Linen	2 x 18W GU24	17.0" x 12.4"
DC618PG-A-PD-318	120V	54W	Acrylic / Linen	3 x 18W GU24	20.1" x 12.9"

- * GU24 Bulb CT Option: 2700K, 4000K
- * GU24 Bulb option: LED bulb 9W, 3000K or 4000K, 120V or 120V~277V,800lm.

CEILING FIXTURE & PENDANT

- * Housing: Die-formed cold-rolled steel
- * Shade: High transmission acrylic front panel creates excellent light distribution and uniformity
- * Inner shade: Semi-clear white decorative fibre linen
- * Outer shade: Semi-clear silver decorative fibre linen
- * LED: High efficiency, high CRI, binned and mixed to reach uniform light
- * 5 years warranty on driver and LED module
- * Certification: UL /cUL, ETL / cETL



LED TYPE

Model	Input Voltage	Input Wattage	LED CT / CRI	Lumen (typ)	Dimension (OD x H)
DC814D-A-3000K	120V ~ 277V	24W	3000K / > 80	1700	17.5" x 5.5"
DC818D-A-3000K	120V ~ 277V	35W	3000K / > 80	2480	20.8" x 6.1"
DC814D-A-PD-3000K	120V ~ 277V	24W	3000K / > 80	1700	17.5" x 12.5"
DC818D-A-PD-3000K	120V ~ 277V	35W	3000K / > 80	2480	20.8" x 13.1"

- * Color Temperature Option (-xxxxK): 3000K, 3500K, 4000K, 5000K
- * Lumen (typ): Tested with 3000K CT

GU24 CFL TYPE

Model	Input Voltage	Input Wattage	Shade	Lamp	Dimension (OD x H)
DC814PG-A-218	120V	36W	Acrylic / Linen	2 x 18W GU24	17.5" x 5.5"
DC818PG-A-318	120V	54W	Acrylic / Linen	3 x 18W GU24	20.8" x 6.1"
DC814PG-A-PD-218	120V	36W	Acrylic / Linen	2 x 18W GU24	17.5" x 12.5"
DC818PG-A-PD-318	120V	54W	Acrylic / Linen	3 x 18W GU24	20.8" x 13.1"

- * GU24 Bulb CT Option: 2700K, 4000K
- * GU24 Bulb option: LED bulb 9W, 3000K or 4000K, 120V or 120V~277V,800lm.

LED WALL SCONCE



- * Housing: Die-formed cold-rolled steel
- * Shade: High transmission acrylic or glass creates excellent light distribution and uniformity
- * LED: High efficiency, high CRI, binned and mixed to reach uniform light
- * High power factor, low THD
- * LED CRI: > 80
- * 5 years warranty on driver and LED module
- * Certification: ETL / cETL, Energy Star
- * Finish Option: -62 Satin Nickel, -30 Oil Rubbed Bronze



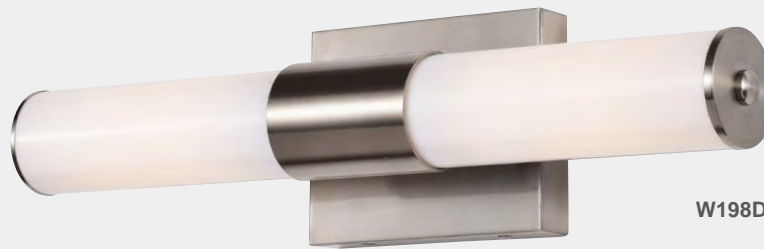
W189D



W188D



W193D



W198D

Model	Input Voltage	Input Wattage	LED CT	Lumen (typ)	Shade	Dimension (H x W x E)	Energy Star
W189D-xxxxK	120V ~ 277V	15W	3000K	1300	Acrylic	16.0" x 5.0" x 3.8"	YES
W188D-xxxxK	120V ~ 277V	9W	3000K	700	Acrylic	12.8" x 4.3" x 3.5"	YES
W193D-xxxxK	120V ~ 277V	15W	3000K	1180	Opal Glass	15.5" x 5.0" x 5.8"	--
W198D-xxxxK	120V ~ 277V	15W	3000K	1100	Acrylic	18.7" x 4.8" x 3.7"	YES

* Lumen (typ): Tested with 3000K CT

* More Color Temperature Option: 3500K, 4000K, 5000K

LED WALL SCONCE

- * Housing: Die-formed cold-rolled steel
- * Shade: High transmission acrylic or glass creates excellent light distribution and uniformity
- * LED: High efficiency, high CRI, binned and mixed to reach uniform light
- * High power factor, low THD
- * LED CRI: > 80
- * 5 years warranty on driver and LED module
- * Certification: ETL / cETL
- * Finish Option: -62 Satin Nickel, -30 Oil Rubbed Bronze



W190D

W190D-L

W201D/W202D

W210D

W210D-L

Model	Input Voltage	Input Wattage	LED CT	Lumen (typ)	Shade	Dimension (H x W x E)
W190D-xxxxK	120V ~ 277V	15W	30000K	1025	Acrylic	15.0" x 5.0" x 4.0"
W190D-L-xxxxK	120V ~ 277V	23W	30000K	1550	Acrylic	24.0" x 5.0" x 4.0"
W201D-xxxxK	120V ~ 277V	17W	30000K	1100	Acrylic	24.0" x 5.8" x 4.0"
W202D-xxxxK	120V ~ 277V	14W	30000K	900	Acrylic	15.0" x 5.8" x 4.0"
W210D-xxxxK	120V ~ 277V	15W	30000K	980	Glass	15.0" x 4.9" x 3.9"
W210D-L-xxxxK	120V ~ 277V	18W	30000K	1450	Glass	24.0" x 4.9" x 3.9"

* Lumen (typ): Tested with 3000K CT
 * More Color Temperature Option: 3500K, 4000K, 5000K

WALL SCONCE



- * Housing: Die-formed cold-rolled steel
- * Shade: High transmission acrylic or glass creates excellent light distribution and uniformity
- * LED: High efficiency, high CRI, binned and mixed to reach uniform light
- * High power factor, low THD
- * LED CRI: > 80
- * 5 years warranty on driver and LED module
- * Certification: UL / cUL, ETL / cETL, Energy Star
- * Finish Option: -62 Satin Nickel, -30 Oil Rubbed Bronze



MDF030



MDF032



MDF033/MDF025

LED TYPE

Model	Input Voltage	Input Wattage	LED CT	Lumen (typ)	Finish / Shade	Dimension (W x H x D)	Energy Star
MDF030D-xxxxK	120V	14W	3000K	1050	S. Nickel /	8.7" x 10.2" x 3.8"	YES
MDF032D-xxxxK	120V	15W	3000K	1150	Frosted glass	7.2" x 10.0" x 4.0"	YES
MDF033D-14W-xxxxK	120V	14W	3000K	950	S. Nickel /	9.4" x 10.5" x 4.0"	YES
MDF033D-xxxxK	120V ~ 277V	22W	3000K	1800	Acrylic	9.4" x 10.5" x 4.0"	YES

* Lumen measured with 3000K CT LED

* More Color Temperature Option: 3500K, 4000K, 5000K

GU24 CFL TYPE

Model	Input Voltage	Input Wattage	Lamp	Finish	Shade	Dimension (W x H x D)	Energy Star
MDF030-123	120V	23W	1 x 23W GU24	Satin Nickel	Frosted Glass	8.7" x 10.2" x 3.8"	--
MDF030-213	120V	26W	2 x 13W GU24	Satin Nickel	Frosted Glass	8.7" x 10.2" x 3.8"	--
MDF032-123	120V	23W	1 x 23W GU24	Satin Nickel	Frosted Glass	7.2" x 10.0" x 4.0"	--
MDF032-213	120V	26W	2 x 13W GU24	Satin Nickel	Frosted Glass	7.2" x 10.0" x 4.0"	--
MDF033PG-213	120V	26W	2 x 13W GU24	Satin Nickel	Acrylic	9.4" x 10.5" x 4.0"	--
MDF025PG-213	120V	26W	2 x 13W GU24	Plastic/ Silver	Acrylic	9.1" x 10.5" x 4.0"	--

* GU24 CFL Bulb CT Option: 2700K, 4000K

* GU24 LED Bulb Option: 9W LED Bulb, 3000K or 4000K

WALL SCONCE



- * Housing: Die-formed cold-rolled steel
- * Shade: High transmission acrylic or glass creates excellent light distribution and uniformity
- * LED: High efficiency, high CRI, binned and mixed to reach uniform light
- * High power factor, low THD
- * LED CRI: > 80
- * 5 years warranty on driver and LED module
- * Certification: UL / cUL, ETL / cETL, Energy Star



MDF021



W104



W169

LED TYPE

Model	Input Voltage	Input Wattage	LED CT	Lumen (typ)	Finish / Shade	Dimension (W x H x D)	Energy Star
MDF021D-xxxxK	120V	15W	3000K	1130	ORB / Frosted Glass	8.5" x 10.3" x 3.5"	YES
W104D-xxxxK	120V	15W	3000K	1100	ORB / Acrylic	10.7" x 11.5" x 4.0"	YES
W169D	120V	9W LED BULB	2700K	800	ORB / Acrylic	8.8" x 11.8" x 3.3"	--

* Lumen measured with 3000K CT LED

* More Color Temperature Option: 3500K, 4000K, 5000K

GU24 CFL TYPE

Model	Input Voltage	Lamp	Finish	Shade	Dimension (W x H x D)	Energy Star
MDF021PG-213	120V	2 x 13W GU24 CFL	ORB	Frosted Glass	8.5" x 10.3" x 3.5"	--
W104-213	120V	2 x 13W GU24 CFL	ORB	Acrylic	10.7" x 11.5" x 4.0"	--

* GU24 CFL Bulb CT Option: 2700K, 4000K

* GU24 LED Bulb Option: 9W LED Bulb, 3000K or 4000K

WALL SCONCE



- * Housing: Die-formed cold-rolled steel
- * Shade: Frosted glass creates excellent light distribution and uniformity
- * LED: High efficiency, high CRI, binned and mixed to reach uniform light
- * High power factor, low THD
- * LED CRI: > 80
- * 5 years warranty on driver and LED module
- * Certification: UL / cUL, ETL / cETL, Energy Star



MDF076

MDF076-A

MDF075

LED TYPE

Model	Input Voltage	Input Wattage	LED CT	Lumen (typ)	Finish / Shade	Dimension (W x H x D)	Energy Star
MDF076D-xxxxK	120V	15W	3000K	1250	ORB / Frosted Glass	8.7" x 14.0" x 3.5"	YES
MDF076D-A-xxxxK	120V	15W	3000K	1250		8.0" x 14.2" x 3.5"	YES
MDF075D-xxxxK	120V	15W	3000K	1230		8.7" x 14.0" x 3.5"	YES

- * Lumen measured with 3000K CT LED
- * More Color Temperature Option: 3500K, 4000K, 5000K

GU24 CFL TYPE

Model	Input Voltage	Lamp	Finish	Shade	Dimension (W x H x D)
MDF076PG-223	120V	2 x 23W GU24	ORB	Frosted Glass	8.7" x 14.0" x 3.5"
MDF076PG-A-223	120V	2 x 23W GU24	ORB	Frosted Glass	8.0" x 14.2" x 3.5"
MDF075PG-223	120V	2 x 23W GU24	ORB	Frosted Glass	8.7" x 14.0" x 3.5"

- * GU24 CFL Bulb CT Option: 2700K, 4000K
- * GU24 LED Bulb Option: 9W LED Bulb, 3000K or 4000K

WALL SCONCE



- * Housing: Die-formed cold-rolled steel
- * Shade: Frosted glass creates excellent light distribution and uniformity
- * LED: High efficiency, high CRI, binned and mixed to reach uniform light
- * High power factor, low THD
- * LED CRI: > 80
- * 5 years warranty on driver and LED module
- * Certification: UL / cUL, ETL / cETL, Energy Star
- * Finish Option: -62 Satin Nickel, -30 Oil Rubbed Bronze



W260D



MDF035D



MDF036D

LED TYPE

Model	Input Voltage	Input Wattage	LED CT	Lumen (typ)	Finish / Shade	Dimension (W x H x D)	Energy Star
W260D-xxxxK	120V	15W	3000K	1150	SN/Frosted Glass	16.5" x 9.8" x 4.7"	YES
MDF035D-xxxxK	120V	15W	3000K	1150	SN/Frosted Glass	10.3" x 11.5" x 4.0"	YES
MDF036D-xxxxK	120V ~ 277V	22W	3000K	1850	SN/Frosted Glass	12.0" x 12.0" x 4.0"	YES

* Lumen measured with 3000K CT LED

* More Color Temperature Option: 3500K, 4000K, 5000K

GU24 CFL TYPE

Model	Input Voltage	Lamp	Finish	Shade	Dimension (W x H x D)	Energy Star
W260-213	120V	2 x 13W GU24	Satin Nickel	Frosted Glass	16.5" x 9.8" x 4.7"	--
MDF035PG-213	120V	2 x 13W GU24	Satin Nickel	Frosted Glass	10.3" x 11.5" x 4.0"	--
MDF036PG-213	120V	2 x 13W GU24	Satin Nickel	Frosted Glass	12.0" x 12.0" x 4.0"	--

* GU24 CFL Bulb CT Option: 2700K, 4000K

* GU24 LED Bulb Option: 9W LED Bulb, 3000K or 4000K

LED WALL SCONCE WITH BUILT-IN EMERGENCY LIGHT



***** BUILT-IN EMERGENCY LIGHTING *****

***** BI-LEVEL LIGHTING *****

- * Housing: Die-formed cold-rolled steel
- * Shade: High transmission acrylic or glass creates excellent light distribution and uniformity
- * LED: High efficiency, high CRI, binned and mixed to reach uniform light
- * High power factor, low THD
- * 5 years warranty on driver and LED module
- * Certification: ETL / cETL, Energy Star



MDF076D-EM



MDF076D-A-EM



W260D-EM



W104D-EM

Model	Input Voltage	Input Wattage	LED CT	Lumen (typ)	Finish / Shade	Dimension (W x H x D)	Energy Star
MDF076D-EM-xxxxK	120V	15W	3000K	1250	ORB / Frosted Glass	8.0" x 14.3" x 3.8"	YES
MDF076D-A-EM-xxxxK	120V	15W	3000K	1250	ORB / Frosted Glass	8.0" x 14.3" x 3.8"	YES
W260D-EM-xxxxK	120V	15W	3000K	1160	SN / Frosted Glass	16.5" x 9.8" x 4.7"	YES
W104D-EM-xxxxK	120V	15W	3000K	1100	ORB / Acrylic	10.7" x 11.5" x 4.0"	YES

* Lumen measured with 3000K CT LED

* More Color Temperature Option: 3500K, 4000K, 5000K

LED WALL SCONCE



- * Housing: Die-formed cold-rolled steel
- * Shade: High transmission acrylic or glass creates excellent light distribution and uniformity
- * LED: High efficiency, high CRI, binned and mixed to reach uniform light
- * High power factor, low THD
- * LED CRI: > 80
- * 5 years warranty on driver and LED module
- * Certification: ETL / cETL, Energy Star
- * Finish Option: -62 Satin Nickel, -30 Oil Rubbed Bronze



W160D



W180D



W168D-62



W175D

Model	Input Voltage	Input Wattage	LED	LED CT	Lumen (typ)	Finish / Shade	Dimension (W x H x D)	Energy Star
W160D-xxxxK	120V	15W	Strip	3000K	920	Satin Nickel / Acrylic	7.0" x 12.0" x 2.8"	YES
W168D-xxxxK	120V	15W	Strip	3000K	770	Satin Nickel / Opal Glass	10.0" x 10.8" x 4.0"	YES
W180D-xxxxK	120V	14W	Strip	3000K	706	Satin Nickel / Acrylic	10.5" x 5.5" x 3.8"	--
W175D-xxxxK	120V	15W	Strip	3000K	750	Satin Nickel / Glass	7.0" x 12.3" x 4.0"	--

- * Lumen measured with 3000K CT LED
- * More Color Temperature Option: 3500K, 4000K, 5000K
- * GU24 LED Bulb Option: 9W LED Bulb, 3000K or 4000K

LED WALL SCONCE



- * Housing: Die-formed cold-rolled steel
- * Shade: High transmission acrylic or glass creates excellent light distribution and uniformity
- * LED: High efficiency, high CRI, binned and mixed to reach uniform light
- * High power factor, low THD
- * LED CRI: > 80
- * 5 years warranty on driver and LED module
- * Certification: ETL / cETL, Energy Star
- * Finish Option: -62 Satin Nickel, -30 Oil Rubbed Bronze



W109D



W208D



W172D



W108D-SN



W108D-ORB

Model	Input Voltage	Input Wattage	LED CT	Lumen (typ)	Finish / Shade	Dimension (W x H x D)	Energy Star
W208D-xxxxK	120V	15W	3000K	760	ORB / Acrylic	12.0" x 7.3" x 3.9"	--
W172D-xxxxK	120V	11W	3000K	780	White	4.9" x 10.2" x 4.0"	YES
W109D-xxxxK	120V	14W	3000K	1200	White	9.8" x 4.5" x 4.0"	--
W108D-62-xxxxK	120V	12W	3000K	1000	SN / Acrylic	5.1" x 14.5" x 4.0"	YES
W108D-30-xxxxK	120V	12W	3000K	1000	ORB / Acrylic	5.1" x 14.5" x 4.0"	YES
W108D-MCT	120V ~ 277V	12W	3000K	1000	SN / Acrylic	5.1" x 14.5" x 4.0"	YES

* Lumen measured with 3000K CT LED
 * More Color Temperature Option: 3500K, 4000K, 5000K

LED WALL SCONCE



- * Housing: Die-formed cold-rolled steel
- * Shade: High transmission acrylic or glass creates excellent light distribution and uniformity
- * LED: High efficiency, high CRI, binned and mixed to reach uniform light
- * High power factor, low THD
- * LED CRI: > 80
- * 5 years warranty on driver and LED module
- * Certification: ETL / cETL, Energy Star



W199D



MDF039D



W194D



W280D

Model	Input Voltage	Input Wattage	LED CT	Lumen (typ)	Finish	Dimension (W x H x D)	Energy Star
W199D-xxxxK-62	120V ~ 277V	14W	3000K	1400	Satin Nickel	16.8" x 8.5" x 4.0"	YES
MDF039D-xxxxK-62	120V ~ 277V	14W	3000K	1360	Satin Nickel	16.0" x 7.9" x 4.0"	YES
W194D-xxxxK-62	120V ~ 277V	15W	3000K	700	Satin Nickel	12.5" x 4.5" x 3.6"	--
W280D-xxxxK-05	120V	18W	3000K	1470	Black	11.5" x 8.1" x 9.5"	--

- * Lumen (typ): Tested with 3000K CT
- * Finish Option: -62 Satin Nickel, -30 Oil Rubbed Bronze
- * More Color Temperature Option: 3500K, 4000K, 5000K

LED WALL SCONCE - JA8

CEC LISTED - MEETS T24 JA8 - CRI >90

- * Housing: Die-formed cold rolled steel
- * Shade: High transmission acrylic or glass creates excellent light distribution and uniformity
- * LED Driver: 120V triac dimming type or 120V ~ 277V, 0 ~ 10V dimming type
- * Min. Dimming level: 3%
- * High Power Factor: > 0.98
- * Low THD: < 10%
- * LM80, TM21 - 60,000 hours min rating
- * LED CRI > 90 per JA8 standard
- * Flicker Free: Meets JA10 standard
- * Certification: ETL / cETL, CEC listed
- * 5 years warranty on driver and LED module
- * Finish: -62 Satin Nickel, -30 Oil Rubbed Bronze



MDF032D



MDF033D



W108D



MDF076D-A

Model	Input Voltage	Input Wattage	LED CT	Lumen (typ)	Finish / Shade	Dimension (W x H x D)
MDF033D(JA8)	120V ~ 277V	22W	3000K	1580	S. Nickel / Acrylic	9.4" x 10.5" x 4.0"
MDF032D(JA8)	120V	15W	3000K	1000	S. Nickel / Frosted glass	7.2" x 10.0" x 4.0"
W108D(JA8)	120V	12W	3000K	850	S. Nickel / Acrylic	5.1" x 14.5" x 4.0"
MDF076D-A(JA8)	120V	15W	3000K	1050	ORB / Frosted glass	8.0" x 14.2" x 3.5"

WALL SCONCE

* Housing: Die-formed cold-rolled steel
 * Certification: UL / cUL



MDF031



MDF039



LW025



FL901



LW026

GU24 CFL TYPE

Model	Input Voltage	Lamp	Finish	Shade	Dimension (W x H x D)	Energy Star
MDF039-213	120V	2 x 13W GU24	Satin Nickel	Acrylic	16.0" x 7.9" x 4.0"	--
MDF031PG-213	120V	2 x 13W GU24	Satin Nickel	Glass	9.1" x 11.0" x 3.7"	--
FL901PG-118	120V	1 x 18W GU24	Satin Nickel	Opal Glass	5.5" x 11.2" x 5.5"	--
LW025PG-118	120V	1 x 18W GU24	Satin Nickel	Alabaster Glass	7.6" x 11.0" x 3.5"	--
LW026PG-118	120V	1 x 18W GU24	Satin Nickel	Opal Glass	4.5" x 7.5" x 4.0"	--

* GU24 CFL Bulb CT Option: 2700K, 4000K
 * GU24 LED Bulb Option: 9W LED Bulb, 3000K or 4000K

LED MINI PENDANT



- * Housing: Aluminum
- * Shade: High transmission acrylic creates excellent light distribution and uniformity
- * LED: High efficiency, high CRI, binned and mixed to reach uniform light
- * High power factor, low THD
- * LED CRI: > 80
- * 5 years warranty on driver and LED module
- * Certification: ETL / cETL, Energy Star
- * Finish Option: -30 Oil Rubbed Bronze



Model	Input Voltage	Input Wattage	LED CT	Lumen (typ)	Finish	Dimension (OD X H X H1)	Energy Star
P268D-xxxxK	120V ~ 277V	37W	3000K	3300	Black	23.5" x 11.8" x 72"	YES
P269D-xxxxK	120V ~ 277V	18W	3000K	1450	Black	13.8" x 7.3" x 72"	YES
P270D-xxxxK	120V ~ 277V	25W	3000K	2200	Black	17.5" x 8.0" x 72"	YES

* Lumen data - Tested by 3000K CT

* More Color Temperature Option: 3500K, 4000K, 5000K

LED MINI PENDANT

- * Housing: Die-formed aluminum
- * Lamp Option: GU24 CFL & LED bulb
- * LED bulb - Energy Star listed, dimmable, Omini Direction type
- * Certification: ETL / cETL



LED TYPE - DIMMABLE

Model	Input Voltage	Lamp	LED CT / CRI	Lumen (typ)	Dimension (OD x H x H1 max)	Finish
P201D-05-3000K	120V	13W CFL or 9W LED Bulb	3000K / >80	820	10.0" x 12.0" x 6.0'	Black
P203D-60-3000K	120V		3000K / >80	820	10.0" x 21.3" x 6.0'	Brushed Aluminum
P205D-05-3000K	120V		3000K / >80	820	10.5" x 20.0" x 6.0'	Black
P207D-60-3000K	120V		3000K / >80	820	11.8" x 15.0" x 6.0'	Brushed Aluminum
P209D-05-3000K	120V		3000K / >80	820	13.8" x 9.8" x 6.0'	Black

- * H1: Hanging cable length
- * GU24 LED Bulb CT Option: 9W LED Bulb, 3000K or 4000K
- * GU24 CFL Bulb CT Option: 13W, 2700K, 4000K

MINI PENDANT

- * Available with GU24 CFL & GU24 LED bulb
- * LED bulb - Energy Star listed, dimmable, Omni Direction type
- * Certification: UL / cUL
- * Finish Option: -30 Oil Rubbed Bronze, -62 Satin Nickel



P035



P120



P117



P118



P058

Model	Input Voltage	Lamp	Finish	Shade	Dimension (OD x H x H1)	Energy Star
P035-1-62	120V		Satin Nickel	Opal Glass	4.8" x 8.7" x 31.0"	--
P120-1-62	120V	9W LED	Satin Nickel	Opal Glass	4.8" x 9.8" x 6.0'	--
P117-1-62	120V	Bulb or	Satin Nickel	Opal Glass	4.8" x 9.8" x 31.0"	--
P118-1-62	120V	13W CFL	Satin Nickel	Opal Glass	8.0" x 19.0" x 6.0'	--
P058-1-62	120V		Satin Nickel	Opal Glass	3.5" x 8.5" x 6.0'	--

* H1: Hanging cable length

* GU24 LED Bulb CT Option: 9W LED Bulb, 3000K or 4000K

* GU24 CFL Bulb CT Option: 13W, 2700K, 4000K

MINI PENDANT

- * Available with GU24 CFL & GU24 LED bulb
- * LED bulb - Energy Star listed, dimmable, Omini Direction type
- * Certification: UL / cUL
- * Finish Option: -30 Oil Rubbed Bronze, -62 Satin Nickel



P130



P059



P301



P501

Model	Input Voltage	Lamp	Finish	Shade	Dimension (OD x H x H1)	Energy Star
P130-1-62	120V		Satin Nickel	Amber glass & silver organza	5.1" x 12.4" x 31.0"	--
P059-62	120V	13W CFL or	Satin Nickel	Steel	5.5" x 9.0" x 6.0"	--
P301-30	120V	9W LED	ORB	Opal Glass	6.7" x 12.0" x 6.0"	--
P501-30	120V		ORB	Glass	8.3" x 7.5" x 60.0"	--

- * H1: Hanging cable length
- * GU24 LED Bulb CT Option: 9W LED Bulb, 3000K or 4000K
- * GU24 CFL Bulb CT Option: 13W, 2700K, 4000K

LED LINEAR PENDANT



- * Housing: Die-formed cold-rolled steel / Aluminum extrusion
- * Shade: High transmission acrylic creates excellent light distribution and uniformity
- * LED: High efficiency, high CRI, binned and mixed to reach uniform light
- * High power factor, low THD
- * Certification: ETL / cETL, Energy Star
- * Finish Option: -62 Satin Nickel, -06 White, -30 Oil Rubbed Bronze



FL0324D / FL0339D / FL0354D

FL0224D / FL0239D / FL0254D

Model	Input Voltage	Input Wattage	LED CT	CRI	Lumen (typ)	Dimensions (L x W x H1 / H2)	Energy Star
FL0224D-PD-xxxxK	120V ~ 277V	11W	3000K	> 80	920	22.0" x 4.8" x 2.7"/5'	YES
FL0239D-PD-xxxxK	120V ~ 277V	18W	3000K	> 80	1410	34.0" x 4.8" x 2.7"/5'	YES
FL0254D-PD-xxxxK	120V ~ 277V	22W	3000K	> 80	1820	46.0" x 4.8" x 2.7"/5'	YES
FL0324D-PD-xxxxK	120V ~ 277V	11W	3000K	> 80	843	22.0" x 4.8" x 2.7"/5'	YES
FL0339D-PD-xxxxK	120V ~ 277V	18W	3000K	> 80	1386	34.0" x 4.8" x 2.7"/5'	YES
FL0354D-PD-xxxxK	120V ~ 277V	22W	3000K	> 80	1610	46.0" x 4.8" x 2.7"/5'	YES

* Color Temperature Option (-xxxxK): 3000K, 3500K, 4000K, 5000K

* Lumen (typ): Tested with 3000K CT

* Finish Option: -62 Satin Nickel, -01 Polish Brass, -06 White, -30 Oil Rubbed Bronze

LED MINI PENDANT & VANITY

- * LED bulb - Energy Star listed, dimmable, Omni Direction type
- * Shade: Clear glass
- * Certification: UL / cUL
- * Finish Option: -62 Satin Nickel, -30 Oil Rubbed Bronze



P117-A



4479-A



P308

Model	Input Voltage	Input Wattage	Finish	Shade	Dimension (OD x H x H1)	Lamp
P117-A-62	120V	8W	Satin Nickel	Clear Glass	4.8" x 9.8" x 31.0"	E26 Filament type
P308-62	120V	8W	Satin Nickel	Clear Glass	5.8" x 7.6" x 6"	LED bulb, 8W,
4479-A-62	120V	16W	Satin Nickel	Clear Glass	20.0" x 4.7" x 4.5"	2700K

- * H1: Hanging cable length
- * E26, LED bulb 2700K

LED PENDANT

- * Available with GU24 CFL & GU24 LED bulb
- * LED bulb - Energy Star listed, dimmable, Omni Direction type
- * Certification: UL / cUL
- * Finish Option: -30 Oil Rubbed Bronze, -62 Satin Nickel



P058-3-62



P117-A-3-62



P117-3-62

Model	Input Voltage	Lamp	Finish	Shade	Dimension (OD x H x H1)	Energy Star
P058-3-62	120V	3 x GU24 LED Bulb	Satin Nickel	Opal Glass	3.5" x 8.5" x 6.0'	--
P117-3-62	120V	3 x GU24 LED Bulb	Satin Nickel	Opal Glass	4.8" x 9.8" x 6.0'	--
P117-A-3-62	120V	3 x E26 LED Bulb	Satin Nickel	Clear Glass	4.8" x 9.8" x 6.0'	--

- * H1: Hanging cable length; Canopy size: 9.8"D x 1.0"H
- * GU24 LED Bulb CT option: 9W LED Bulb, 3000K or 4000K
- * GU24 CFL Bulb CT Option: 13W, 2700K, 4000K

LED VANITY

CEC LISTED - MEETS T24 JA8 CRI > 90

- * Housing: Die-formed cold rolled steel
- * Shade: High transmission acrylic creates excellent light distribution and uniformity
- * LED Driver: 120V triac dimming type or 120V ~ 277V, 0 ~ 10V dimming type
- * Min. Dimming level: 3%
- * Power Factor: > 0.98
- * THD: < 10%
- * LM80, TM21 : 60,000 hours rating
- * LED Rated Life: > 36000 hours
- * LED CRI > 90 per JA8 standard
- * Flicker Free: Meets JA10 standard
- * Certification: ETL / cETL, CEC listed
- * Warranty: 5 years
- * Finish: -62 Satin Nickel, -30 Oil Rubbed Bronze, -06 White



FL5324D



FL5524D



FL2103D

Model	Input Voltage	Input Wattage	LED CT/ CRI	Lumen (typ)	Dimension (L x W x E)	Finish	T24
FL5324D(JA8)	120V	18W	3000K / 90	1327	25.5" x 4.8" x 4.3"	Satin Nickel	YES
FL5524D(JA8)	120V	19W	3000K / 90	1500	25.5" x 4.8" x 4.0"	Satin Nickel	YES
FL2103D(JA8)	120V ~ 277V	24W	3000K / 90	1980	24.5" x 5.7" x 4.5"	Satin Nickel	YES

* Lumen data - Tested by 3000K CT

LED VANITY & T5 HO LAMP VANITY



- * Housing: Die-formed cold-rolled steel
- * Shade: High transmission acrylic creates excellent light distribution and uniformity
- * LED: High efficiency, high CRI, binned and mixed to reach uniform light
- * LED CRI: > 80
- * High power factor, low THD
- * 5 years warranty on driver and LED module
- * Certification: UL /cUL, ETL / cETL, Energy Star
- * More Color Temperature Option: 3500K, 4000K, 5000K
- * Finish Option: -62 Satin Nickel, -30 Oil Rubbed Bronze

Available on Multiple Color Temperature (MCT)



LED TYPE

Model	Input Voltage	Input Wattage	LED CT	Lumen (typ)	Finish	Dimension (L x W x E)	Energy Star
FL5324D-xxxxK	120V	17W	3000K	1450	Satin Nickel	25.5" x 4.8" x 4.3"	YES
FL5339D-xxxxK	120V ~ 277V	23W	3000K	2000	Satin Nickel	37.5" x 4.8" x 4.3"	YES
FL5354D-xxxxK	120V ~ 277V	35W	3000K	3040	Satin Nickel	49.3" x 4.8" x 4.3"	YES
FL5324D-MCT	120V ~ 277V	17W	3000K	1450	Satin Nickel	25.5" x 4.8" x 4.3"	YES
FL5339D-MCT	120V ~ 277V	23W	3000K	2000	Satin Nickel	37.5" x 4.8" x 4.3"	YES
FL5354D-MCT	120V ~ 277V	35W	3000K	3040	Satin Nickel	49.3" x 4.8" x 4.3"	YES

* Lumen data - Tested by 3000K CT

* More Color Temperature Option: 3500K, 4000K, 5000K

* **MCT- 3000K or 3500K or 4000K**

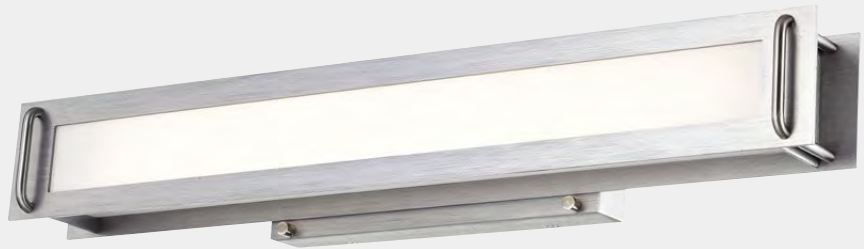
T5 HO LAMP TYPE

Model	Input Voltage	Input Wattage	Finish	Shade	Lamp	Dimension (L x W x E)
FL5324	120V ~ 277V	24W	Satin Nickel	Acrylic	1 x F24T5HO, 24W	25.5" x 4.8" x 4.3"
FL5339	120V ~ 277V	39W	Satin Nickel	Acrylic	1 x F39T5HO, 39W	37.5" x 4.8" x 4.3"
FL5354	120V ~ 277V	54W	Satin Nickel	Acrylic	1 x F54T5HO, 54W	49.3" x 4.8" x 4.3"

LED VANITY



- * Housing: Die-formed cold-rolled steel
- * Shade: High transmission acrylic creates excellent light distribution and uniformity
- * LED: High efficiency, high CRI, binned and mixed to reach uniform light
- * LED CRI: > 80
- * High power factor, low THD
- * 5 years warranty on driver and LED module
- * Certification: ETL / cETL, Energy Star



Model	Input Voltage	Input Wattage	LED CT / CRI	Lumen (typ)	Finish / Shade	Dimension (L x W x E)	Energy Star
FL5324D-A-60-xxxxK	120V	17W	3000K / 80	1420	Brush	26.0" x 4.8" x 4.5"	YES
FL5339D-A-60-xxxxK	120V ~ 277V	23W	3000K / 80	2000	Alumium /	38.0" x 4.8" x 4.5"	YES
FL5354D-A-60-xxxxK	120V ~ 277V	35W	3000K / 80	3000	Acrylic	49.7" x 4.8" x 4.5"	YES

- * Lumen data - Tested by 3000K CT
- * More Color Temperature Option: 3500K, 4000K, 5000K
- * Finish Option: -60 Dark Brush Aluminum, -30 Oil Rubbed Bronze



FL5339D-A & FL5354D-A

LED VANITY



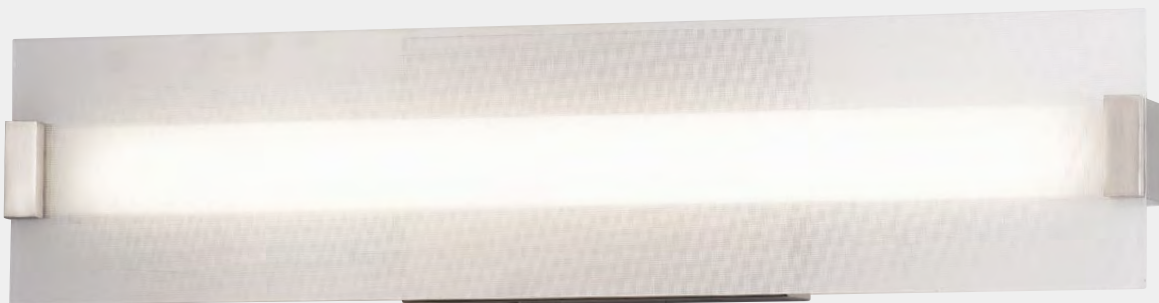
- * Housing: Die-formed cold-rolled steel
- * Shade: High transmission acrylic /glass creates excellent light distribution and uniformity
- * LED: High efficiency, high CRI, binned and mixed to reach uniform light
- * LED CRI: > 80
- * High power factor, low THD
- * 5 years warranty on driver and LED module
- * Certification: ETL / cETL, Energy Star
- * More Color Temperature Option: 3500K, 4000K, 5000K
- * Finish Option: -62 Satin Nickel, -30 Oil Rubbed Bronze

Available on Multiple Color Temperature (MCT)



Model	Input Voltage	Input Wattage	LED CT	Lumen (typ)	Finish	Dimension (L x W x E)	Energy Star
FL5324D-xxxxK-B	120V	19W	3000K	1350	Satin Nickel	22.0" x 3.5" x 3.3"	YES
FL5339D-xxxxK-B	120V ~ 277V	23W	3000K	1700	Satin Nickel	36.0" x 3.5" x 3.3"	YES

- * Lumen data - Tested by 3000K CT
- * Finish Option: -62 Satin Nickel, -30 Oil Rubbed Bronze



Model	Input Voltage	Input Wattage	LED CT	Lumen (typ)	Finish	Dimension (L x W x E)	Energy Star
V276D-MCT	120V ~ 277V	24W	3000K	1700	Satin Nickel	22" x 4.8" x 3.8"	YES

- * Lumen data - Tested by 3000K CT
- * **MCT- 3000K or 3500K or 4000K**

LED VANITY



- * Housing: Die-formed cold-rolled steel
- * Shade: High transmission acrylic creates excellent light distribution and uniformity
- * LED: High efficiency, high CRI, binned and mixed to reach uniform light
- * LED CRI: > 80
- * High power factor, low THD
- * 5 years warranty on driver and LED module
- * Certification: ETL / cETL, Energy Star
- * More Color Temperature Option: 3500K, 4000K, 5000K
- * Finish Option: -62 Satin Nickel, -30 Oil Rubbed Bronze

Available on Multiple Color Temperature (MCT)



Model	Input Voltage	Input Wattage	LED CT	Lumen (typ)	Finish	Dimension (L x W x E)
V5624D-xxxxK	120V ~ 277V	17W	3000K	1500	Satin Nickel	24.0" x 4.3" x 2.3"
V5636D-xxxxK	120V ~ 277V	23W	3000K	1900	Satin Nickel	36.0" x 4.3" x 2.3"
V5648D-xxxxK	120V ~ 277V	35W	3000K	3200	Satin Nickel	48.0" x 4.3" x 2.3"

- * Lumen data - Tested by 3000K CT
- * More Color Temperature Option: 3500K, 4000K, 5000K



Model	Input Voltage	Input Wattage	LED CT	Lumen (typ)	Finish	Dimension (L x W x E)	Energy Star
FL5724D-MCT	120V ~ 277V	17W	3000K	1450	ORB	24.0" x 4.8" x 3.8"	YES
FL5736D-MCT	120V ~ 277V	24W	3000K	2100	ORB	36.0" x 4.8" x 3.8"	YES
FL5748D-MCT	120V ~ 277V	36W	3000K	3300	ORB	48.0" x 4.8" x 3.8"	YES

- * Lumen data - Tested by 3000K CT
- * MCT- 3000K or 3500K or 4000K

LED VANITY & T5 HO LAMP VANITY



- * Housing: Die-formed cold-rolled steel
- * Shade: High transmission acrylic creates excellent light distribution and uniformity
- * LED: High efficiency, high CRI, binned and mixed to reach uniform light
- * LED CRI: > 80
- * High power factor, low THD
- * 5 years warranty on driver and LED module
- * Certification: UL /cUL, ETL / cETL, Energy Star
- * More Color Temperature Option: 3500K, 4000K, 5000K
- * Finish Option: -62 Satin Nickel, -30 Oil Rubbed Bronze

Available on Multiple Color Temperature (MCT)



LED TYPE

Model	Input Voltage	Input Wattage	LED CT	Lumen (typ)	Finish	Dimension (L x W x E)	Energy Star
FL5524D-xxxxK	120V	17W	3000K	1520	Satin Nickel	25.5" x 4.8" x 4.0"	YES
FL5539D-xxxxK	120V ~ 277V	24W	3000K	2110	Satin Nickel	37.5" x 4.8" x 4.0"	YES
FL5554D-xxxxK	120V ~ 277V	36W	3000K	3220	Satin Nickel	49.3" x 4.8" x 4.0"	YES
FL5524D-MCT	120V ~ 277V	17W	3000K	1520	Satin Nickel	25.5" x 4.8" x 4.0"	YES
FL5539D-MCT	120V ~ 277V	24W	3000K	2110	Satin Nickel	37.5" x 4.8" x 4.0"	YES
FL5554D-MCT	120V ~ 277V	36W	3000K	3220	Satin Nickel	49.3" x 4.8" x 4.0"	YES

- * Lumen data - Tested by 3000K CT
- * More Color Temperature Option: 3500K, 4000K, 5000K
- * **MCT- 3000K or 3500K or 4000K**

T5 HO LAMP TYPE

Model	Input Voltage	Input Wattage	Finish	Shade	Lamp	Dimension (L x W x E)
FL5524	120V ~ 277V	24W	Satin Nickel	Acrylic	1 x F24T5HO, 24W	25.5" x 4.8" x 4.0"
FL5539	120V ~ 277V	39W	Satin Nickel	Acrylic	1 x F39T5HO, 39W	37.5" x 4.8" x 4.0"
FL5554	120V ~ 277V	54W	Satin Nickel	Acrylic	1 x F54T5HO, 54W	49.3" x 4.8" x 4.0"

LED VANITY



- * Housing: Die-formed cold-rolled steel
- * Shade: High transmission acrylic creates excellent light distribution and uniformity
- * LED: High efficiency, high CRI, binned and mixed to reach uniform light
- * LED CRI: > 80
- * High power factor, low THD
- * 5 years warranty on driver and LED module
- * Certification: ETL / cETL, Energy Star
- * More Color Temperature Option: 3500K, 4000K, 5000K
- * Finish Option: -62 Satin Nickel, -30 Oil Rubbed Bronze



Model	Input Voltage	Input Wattage	LED CT	Lumen (typ)	Finish	Dimension (L x W x E)	Energy Star
FL5524D-xxxxK-A	120V	17W	3000K	1520	Satin Nickel	24.8" x 4.7" x 3.5"	YES
FL5539D-xxxxK-A	120V ~ 277V	23W	3000K	2110	Satin Nickel	36.8" x 4.7" x 3.5"	YES
FL5554D-xxxxK-A	120V ~ 277V	36W	3000K	3220	Satin Nickel	48.5" x 4.7" x 3.5"	YES

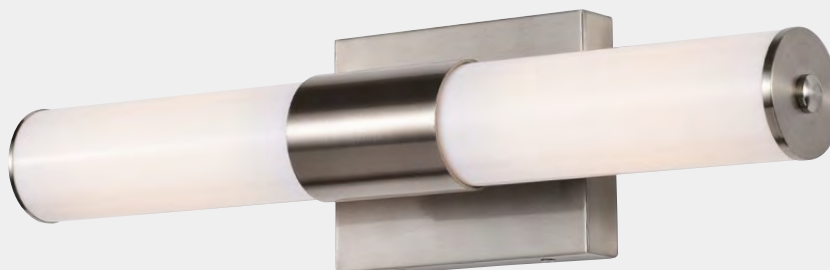


Model	Input Voltage	Input Wattage	LED CT	Lumen (typ)	Finish	Dimension (L x W x E)	Energy Star
FL5524D-xxxxK-B	120V	17W	3000K	1520	Satin Nickel	24.8" x 4.7" x 3.3"	YES
FL5539D-xxxxK-B	120V ~ 277V	23W	3000K	2110	Satin Nickel	36.8" x 4.7" x 3.3"	YES
FL5554D-xxxxK-B	120V ~ 277V	36W	3000K	3220	Satin Nickel	48.5" x 4.7" x 3.3"	YES

LED VANITY



- * Housing: Die-formed cold-rolled steel
- * Shade: High transmission acrylic creates excellent light distribution and uniformity
- * LED: High efficiency, high CRI, binned and mixed to reach uniform light
- * LED CRI: > 80
- * High power factor, low THD
- * 5 years warranty on driver and LED module
- * Certification: ETL / cETL, Energy Star
- * More Color Temperature Option: 3500K, 4000K, 5000K
- * Finish Option: -62 Satin Nickel, -30 Oil Rubbed Bronze



Model	Input Voltage	Input Wattage	LED CT	Lumen (typ)	Finish	Dimension (L x W x E)	Energy Star
FL5524D-xxxxK-C	120V	17W	3000K	1520	Satin Nickel	25.2" x 4.8" x 3.8"	YES
FL5539D-xxxxK-C	120V ~ 277V	24W	3000K	2110	Satin Nickel	37.0" x 4.8" x 3.8"	YES
FL5554D-xxxxK-C	120V ~ 277V	36W	3000K	3220	Satin Nickel	48.8" x 4.8" x 3.8"	YES

- * Lumen data - Tested by 3000K CT
- * Finish Option: -62 Satin Nickel, -30 Oil Rubbed Bronze



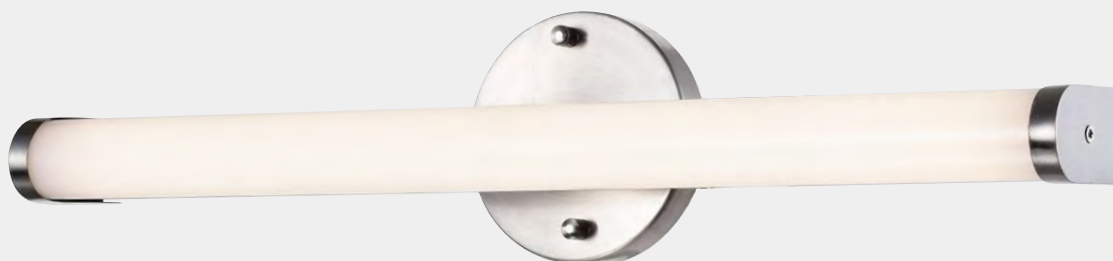
Model	Input Voltage	Input Wattage	LED CT/ CRI	Lumen (typ)	Finish	Dimension (L x W x E)
V560D-48-25W-30	120V ~ 277V	25W	T5 LED Tube	3500	ORB	47.0" x 4.8" x 3.0"
V560D-24-30	120V ~ 277V	11W	3000K / >80	825	ORB	24.0" x 4.8" x 3.0"
V560D-36-30	120V ~ 277V	18W	3000K / >80	1350	ORB	36.0" x 4.8" x 3.0"
V560D-48-30	120V ~ 277V	23W	3000K / >80	1720	ORB	47.0" x 4.8" x 3.0"

- * Lumen data - Tested by 3000K CT



LED VANITY

- * Housing: Die-formed cold-rolled steel
- * Shade: High transmission acrylic creates excellent light distribution and uniformity
- * LED: High efficiency, high CRI, binned and mixed to reach uniform light
- * LED CRI: > 80
- * High power factor, low THD
- * 5 years warranty on driver and LED module
- * Certification: ETL / cETL, Energy Star
- * More Color Temperature Option: 3500K, 4000K, 5000K
- * Finish Option: -62 Satin Nickel, -30 Oil Rubbed Bronze



Model	Input Voltage	Input Wattage	LED CT/ CRI	Lumen (typ)	Finish	Dimension (L x W x E)	Energy Star
FL0224D-VT-xxxxK	120V ~ 277V	11W	3000K / 80	935	Satin Nickel	22.0" x 4.8" x 3.8"	YES
FL0239D-VT-xxxxK	120V ~ 277V	18W	3000K / 80	1530	Satin Nickel	34.0" x 4.8" x 3.8"	YES
FL0254D-VT-xxxxK	120V ~ 277V	23W	3000K / 80	1950	Satin Nickel	46.0" x 4.8" x 3.8"	YES

* Lumen data - Tested by 3000K CT



Model	Input Voltage	Input Wattage	LED CT / CRI	Lumen (typ)	Finish	Dimension (L x W x E)	Energy Star
FL0324D-VT-xxxxK	120V ~ 277V	11W	3000K / 80	935	Satin Nickel	22.0" x 4.8" x 3.8"	YES
FL0339D-VT-xxxxK	120V ~ 277V	18W	3000K / 80	1530	Satin Nickel	34.0" x 4.8" x 3.8"	YES
FL0354D-VT-xxxxK	120V ~ 277V	23W	3000K / 80	1950	Satin Nickel	46.0" x 4.8" x 3.8"	YES

* Lumen data - Tested by 3000K CT

LED VANITY



- * Housing: Die-formed cold-rolled steel
- * Shade: High transmission acrylic creates excellent light distribution and uniformity
- * LED: High efficiency, high CRI, binned and mixed to reach uniform light
- * LED CRI: > 80
- * High power factor, low THD
- * 5 years warranty on driver and LED module
- * Certification: ETL / cETL, Energy Star
- * More Color Temperature Option: 3500K, 4000K, 5000K
- * Finish Option: -62 Satin Nickel, -30 Oil Rubbed Bronze

Available on Multiple Color Temperature (MCT)

MCT- 3000K or 3500K or 4000K



Model	Input Voltage	Input Wattage	LED CT	Lumen (typ)	Finish	Dimension (L x W x E)	Energy Star
FL2103D-xxxxK	120V ~ 277V	23W	3000K	2200	Satin Nickel	24.5" x 5.7" x 4.5"	YES
FL2105D-xxxxK	120V ~ 277V	36W	3000K	3260	Satin Nickel	36.5" x 5.7" x 4.5"	YES
FL2106D-xxxxK	120V ~ 277V	46W	3000K	4600	Satin Nickel	48.5" x 5.7" x 4.5"	YES
FL2103D-MCT	120V ~ 277V	23W	3000K	2200	Satin Nickel	24.5" x 5.7" x 4.5"	YES
FL2105D-MCT	120V ~ 277V	36W	3000K	3400	Satin Nickel	36.5" x 5.7" x 4.5"	YES
FL2106D-MCT	120V ~ 277V	46W	3000K	4600	Satin Nickel	48.5" x 5.7" x 4.5"	YES

* Lumen data - Tested by 3000K CT



Model	Input Voltage	Input Wattage	LED CT	Lumen (typ)	Finish	Dimension (L x W x E)	Energy Star
FL2103D-A-xxxxK	120V ~ 277V	23W	3000K	2200	ORB	24.5" x 5.7" x 4.5"	YES
FL2105D-A-xxxxK	120V ~ 277V	36W	3000K	3260	ORB	36.5" x 5.7" x 4.5"	YES
FL2106D-A-xxxxK	120V ~ 277V	46W	3000K	4600	ORB	48.5" x 5.7" x 4.5"	YES
FL2103D-A-MCT	120V ~ 277V	23W	3000K	2200	ORB	24.5" x 5.7" x 4.5"	YES
FL2105D-A-MCT	120V ~ 277V	36W	3000K	3400	ORB	36.5" x 5.7" x 4.5"	YES
FL2106D-A-MCT	120V ~ 277V	46W	3000K	4600	ORB	48.5" x 5.7" x 4.5"	YES

* Lumen data - Tested by 3000K CT

LED VANITY



- * Housing: Die-formed cold-rolled steel
- * Shade: High transmission acrylic creates excellent light distribution and uniformity
- * LED: High efficiency, high CRI, binned and mixed to reach uniform light
- * LED CRI: > 80
- * High power factor, low THD
- * 5 years warranty on driver and LED module
- * Certification: ETL / cETL, Energy Star
- * More Color Temperature Option: 3500K, 4000K, 5000K
- * Finish Option: -62 Satin Nickel, -30 Oil Rubbed Bronze

Available on Multiple Color Temperature (MCT)

MCT- 3000K or 3500K or 4000K



Model	Input Voltage	Input Wattage	LED CT	Lumen (typ)	Finish	Dimension (L x W x E)	Energy Star
FL2103D-F-xxxxK	120V ~ 277V	23W	3000K	2200	Satin Nickel	24.5" x 5.2" x 4.0"	YES
FL2105D-F-xxxxK	120V ~ 277V	36W	3000K	3260	Satin Nickel	36.5" x 5.2" x 4.0"	YES
FL2106D-F-xxxxK	120V ~ 277V	46W	3000K	4600	Satin Nickel	48.5" x 5.2" x 4.0"	YES
FL2103D-F-MCT	120V ~ 277V	23W	3000K	2200	Satin Nickel	24.5" x 5.2" x 4.0"	YES
FL2105D-F-MCT	120V ~ 277V	36W	3000K	3400	Satin Nickel	36.5" x 5.2" x 4.0"	YES
FL2106D-F-MCT	120V ~ 277V	46W	3000K	4600	Satin Nickel	48.5" x 5.2" x 4.0"	YES

* Lumen data - Tested by 3000K CT



Model	Input Voltage	Input Wattage	LED CT	Lumen (typ)	Finish	Dimension (L x W x E)	Energy Star
FL2103D-C-xxxxK	120V ~ 277V	23W	3000K	2200	Satin Nickel	24.5" x 5.0" x 4.0"	YES
FL2105D-C-xxxxK	120V ~ 277V	36W	3000K	3260	Satin Nickel	36.5" x 5.0" x 4.0"	YES
FL2106D-C-xxxxK	120V ~ 277V	46W	3000K	4600	Satin Nickel	48.5" x 5.0" x 4.0"	YES
FL2103D-C-MCT	120V ~ 277V	23W	3000K	2200	Satin Nickel	24.5" x 5.0" x 4.0"	YES
FL2105D-C-MCT	120V ~ 277V	36W	3000K	3400	Satin Nickel	36.5" x 5.0" x 4.0"	YES
FL2106D-C-MCT	120V ~ 277V	46W	3000K	4600	Satin Nickel	48.5" x 5.0" x 4.0"	YES

* Lumen data - Tested by 3000K CT

VANITY



- * Housing: Die-formed cold-rolled steel
- * Shade: High transmission acrylic creates excellent light distribution and uniformity
- * LED: High efficiency, high CRI, binned and mixed to reach uniform light
- * LED CRI: > 80
- * High power factor, low THD
- * 5 years warranty on driver and LED module
- * Certification: UL /cUL, ETL / cETL, Energy Star
- * More Color Temperature Option: 3500K, 4000K, 5000K
- * Finish Option: -08 Gray / Silver, -30 Oil Rubbed Bronze

Available on Multiple Color Temperature (MCT)



LED TYPE

Model	Input Voltage	Input Wattage	LED CT	Lumen (typ)	Finish	Dimension (L x W x E)	Energy Star
FL2103D-B-xxxxK	120V ~ 277V	23W	3000K	2200	Silver / Plastic	24.5" x 5.5" x 4.0"	YES
FL2105D-B-xxxxK	120V ~ 277V	36W	3000K	3260	Silver / Plastic	36.5" x 5.5" x 4.0"	YES
FL2106D-B-xxxxK	120V ~ 277V	46W	3000K	4600	Silver / Plastic	48.5" x 5.5" x 4.0"	YES
FL2103D-B-MCT	120V ~ 277V	23W	3000K	2200	Gray / Silver	24.5" x 5.5" x 4.0"	YES
FL2105D-B-MCT	120V ~ 277V	36W	3000K	3500	Gray / Silver	36.5" x 5.5" x 4.0"	YES
FL2106D-B-MCT	120V ~ 277V	46W	3000K	4700	Gray / Silver	48.5" x 5.5" x 4.0"	YES

* Lumen data - Tested by 3000K CT

* MCT- 3000K or 3500K or 4000K

LED TYPE

Model	Input Voltage	Input Wattage	LED CT	Lumen (typ)	Finish	Dimension (L x W x E)	Energy Star
3-0115D-xxxxK	120V	14W	3000K	1120	Silver / Plastic	12.2" x 5.5" x 4.0"	YES
3-0615D-xxxxK	120V	15W	3000K	1200	Silver / Plastic	18.2" x 5.5" x 4.0"	YES

* Lumen data - Tested by 3000K CT

GU24 CFL TYPE

Model	Input Voltage	Input Wattage	Lamp	Finish	Shade	Dimension (L x W x E)
3-0115PG-218	120V	36W	2 x 18W GU24	Silver / Plastic	Acrylic	12.2" x 5.5" x 3.5"
3-0615PG-223	120V	46W	2 x 23W GU24	Silver / Plastic	Acrylic	18.2" x 5.5" x 3.5"
3-0515PG-223	120V	46W	2 x 23W GU24	Silver / Plastic	Acrylic	24.2" x 5.5" x 3.5"

* GU24 Bulb CT Option: 2700K, 4000K

FLUORESCENT LAMP VANITY



- * Housing: Die-formed cold-rolled steel
- * Shade: Opal Acrylic
- * Finish Option: -06 White, -30 Oil Rubbed Bronze
- * Certification: UL / cUL



T8 LAMP TYPE

Model	Input Voltage	Input Wattage	Lamp	Finish	Shade	Dimension (L x W x E)
FL2103-217 HPF	120V ~ 277V	34W	2 x F17T8, 17W	Satin Nickel	Acrylic	24.5" x 5.7" x 4.5"
FL2105-225 HPF	120V ~ 277V	50W	2 x F25T8, 25W	Satin Nickel	Acrylic	36.5" x 5.7" x 4.5"
FL2106-232 HPF	120V ~ 277V	56W	2 x F32T8, 32W	Satin Nickel	Acrylic	48.5" x 5.7" x 4.5"



T8 LAMP TYPE

Model	Input Voltage	Input Wattage	Lamp	Finish	Shade	Dimension (L x W x E)
FL2124-217-62	120V ~ 277V	34W	2 x F17T8, 17W	Satin Nickel	Acrylic	24.5" x 5.0" x 4.0"
FL2136-225-62	120V ~ 277V	50W	2 x F25T8, 25W	Satin Nickel	Acrylic	36.5" x 5.0" x 4.0"
FL2048-232-62	120V ~ 277V	56W	2 x F32T8, 32W	Satin Nickel	Acrylic	48.5" x 5.0" x 4.0"



T5 HO LAMP TYPE

Model	Input Voltage	Input Wattage	Lamp	Finish	Shade	Dimension (L x W x E)
FL5224-62	120V ~ 277V	48W	2 x F24T5HO, 24W	Satin Nickel	Acrylic	22.5" x 5.0" x 5.0"
FL5239-62	120V ~ 277V	78W	2 x F39T5HO, 39W	Satin Nickel	Acrylic	36.5" x 5.0" x 5.0"
FL5254-62	120V ~ 277V	108W	2 x F54T5HO, 54W	Satin Nickel	Acrylic	48.5" x 5.0" x 5.0"

LED VANITY

- * Housing: Die-formed cold-rolled steel
- * Shade: Opal or Clear glass creates excellent light distribution and uniformity
- * LED CRI: > 80
- * High power factor, low THD
- * Certification: UL / cUL
- * Finish Option: -62 Satin Nickel, -30 Oil Rubbed Bronze



Model	Input Voltage	Input Wattage	Lamp	Lumen (typ)	Finish	Dimension (L x W x E)
6610D-109	120V	9W	E26, LED bulb	800	Satin Nickel	7.5" x 4.3" x 6.0"
6610D-209	120V	18W	9W,	1600	Satin Nickel	12.8" x 4.3" x 6.0"
6610D-309	120V	27W	3000K or 4000K	2400	Satin Nickel	21.7" x 4.3" x 6.0"



Model	Input Voltage	Input Wattage	Lamp	Finish	Shade	Dimension (L x H x E)
4493-108-33	120V	8W	E26 Filament type	— Antique Brass/	Clear Glass	6.3" x 11.0" x 8.0"
4493-208-33	120V	16W	LED bulb,	— Dark Bronze	Clear Glass	15.5" x 11.0" x 8.0"
4493-308-33	120V	24W	8W, 2700K		Clear Glass	24.8" x 11.0" x 8.0"

* E26, LED bulb 2700K

VANITY

* Available with GU24 LED Bulb

- * Housing: Die-formed cold rolled steel
- * LED bulb option - 9W, 800lm, Omini Direction, 3000K or 4000K
- * GU24 CFL Bulb CT Option: 2700K, 4000K
- * Certification: UL / cUL
- * Finish: -62 Satin Nickel, -30 Oil Rubbed Bronze



Model	Input Voltage	Finish	Shade	Lamp	Dimension (L x H x E)	Energy Star
4475-113-62	120V	Satin Nickel	Alabaster Glass	1 x 13W GU24	6.0" x 9.5" x 8.5"	--
4475-213-62	120V	Satin Nickel	Alabaster Glass	2 x 13W GU24	18.0" x 9.5" x 8.5"	--
4475-313-62	120V	Satin Nickel	Alabaster Glass	3 x 13W GU24	24.0" x 9.5" x 8.5"	--
4475-413-62	120V	Satin Nickel	Alabaster Glass	4 x 13W GU24	36.0" x 9.5" x 8.5"	--

* LED bulb option - 9W, 800lm, Omini Direction, 3000K or 4000K



Model	Input Voltage	Finish	Shade	Lamp	Dimension (L x H x E)	Energy Star
4476-113-62	120V	Satin Nickel	Diffused Glass	1 x 13W GU24	4.5" x 9.8" x 5.5"	--
4476-213-62	120V	Satin Nickel	Diffused Glass	2 x 13W GU24	12.0" x 9.8" x 5.5"	--
4476-313-62	120V	Satin Nickel	Diffused Glass	3 x 13W GU24	24.0" x 9.8" x 5.5"	--
4476-413-62	120V	Satin Nickel	Diffused Glass	4 x 13W GU24	30.0" x 9.8" x 5.5"	--

* LED bulb option - 9W, 800lm, Omini Direction, 3000K or 4000K

VANITY

* Available with GU24 LED Bulb

- * Housing: Die-formed cold rolled steel
- * LED bulb option - 9W, 800lm, Omini Direction, 3000K or 4000K
- * GU24 CFL Bulb CT Option: 2700K, 4000K
- * Certification: UL / cUL
- * Finish: -62 Satin Nickel, -30 Oil Rubbed Bronze



Model	Input Voltage	Finish	Shade	Lamp	Dimension (L x H x E)	Energy Star
4478-113-62	120V	Satin Nickel	Alabaster Glass	1 x 13W GU24	4.5" x 7.8" x 7.8"	--
4478-213-62	120V	Satin Nickel	Alabaster Glass	2 x 13W GU24	14.0" x 7.8" x 7.8"	--
4478-313-62	120V	Satin Nickel	Alabaster Glass	3 x 13W GU24	24.0" x 7.8" x 7.8"	--
4478-413-62	120V	Satin Nickel	Alabaster Glass	4 x 13W GU24	36.0" x 7.8" x 7.8"	--

* LED bulb Option - 9W, 800lm, Omini Direction, 3000K or 4000K



Model	Input Voltage	Finish	Shade	Lamp	Dimension (L x H x E)
4498-118-30	120V	Oil Rubbed Bronze	Opal Glass	1 x 18W GU24	4.8" x 9.6" x 6.3"
4498-218-30	120V	Oil Rubbed Bronze	Opal Glass	2 x 18W GU24	13.3" x 9.6" x 6.3"
4498-318-30	120V	Oil Rubbed Bronze	Opal Glass	3 x 18W GU24	22.5" x 9.6" x 6.3"

* LED bulb Option - 9W, 800lm, Omini Direction, 3000K or 4000K

VANITY

* Available with GU24 LED Bulb

- * Housing: Die-formed cold rolled steel
- * LED bulb option - 9W, 800lm, Omini Direction, 3000K or 4000K
- * GU24 CFL Bulb CT Option: 2700K, 4000K
- * Certification: UL / cUL
- * Finish: -62 Satin Nickel, -30 Oil Rubbed Bronze



Model	Input Voltage	Finish	Shade	Lamp	Dimension (L x H x E)
4488-118-62	120V	Satin Nickel	Opal Glass	1 x 18W GU24	4.3" x 9.5" x 5.0"
4488-218-62	120V	Satin Nickel	Opal Glass	2 x 18W GU24	12.0" x 9.5" x 5.0"
4488-318-62	120V	Satin Nickel	Opal Glass	3 x 18W GU24	18.0" x 9.5" x 5.0"
4488-418-62	120V	Satin Nickel	Opal Glass	4 x 18W GU24	24.0" x 9.5" x 5.0"

* LED bulb option - 9W, 800lm, Omini Direction, 3000K or 4000K



Model	Input Voltage	Finish	Shade	Lamp	Dimension (L x W x E)	Energy Star
4479-223-62	120V	Satin Nickel	Opal Glass	2 x 23W GU24 or 2 x 9W GU24 LED Bulb	20.0" x 4.7" x 4.5"	--

- * GU24 CFL Bulb CT Option: 2700K, 4000K
- * GU24 LED Bulb Option: 9W LED Bulb, 3000K or 4000K
- * Finish Option: -62 Satin Nickel, -70 Chrome, -30 Oil Rubbed Bronze

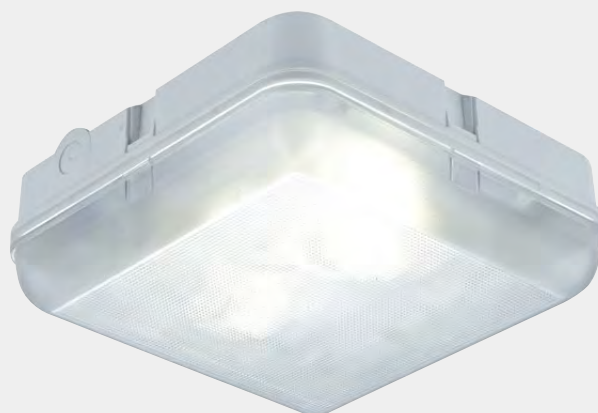
OUTDOOR LIGHT



- * Housing: Injected molded polycarbonate
- * Shade: Injection molded polycarbonate
- * Built in with or without photo cell
- * Wet location rated
- * 5 years warranty on driver and LED module
- * Certification:UL / cUL, ETL / cETL, Energy Star



BH1



BH3



BH2

LED TYPE

Model	Input Voltage	Input Wattage	LED CT	Lumen (typ)	Dimension (L x W x H)	Energy Star
BH1D-xxxxK	120V	12W	4000K	1100	9.2" x 5.0" x 4.3"	YES
BH2D-xxxxK	120V	16W	4000K	1200	11.0"OD x 3.7"H	YES
BH3D-xxxxK	120V	16W	4000K	1200	11.0" x 11.0" x 3.7"	YES

- * Lumen (typ): Tested with 4000K CT
- * More Color Temperature Option: 5000K

GU24 CFL TYPE

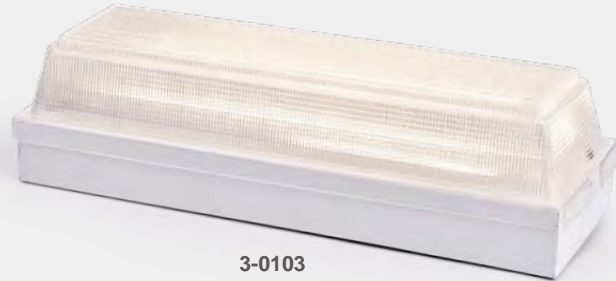
Model	Input Voltage	Input Wattage	Housing / Shade	Lamp	Dimension (L x W x H)	Energy Star
BH1PG-118	120V	18W	Opal PC	1 x 18W GU24	9.2" x 5.0" x 4.3"	--
BH2PG-213	120V	26W	Opal PC	2 x 13W GU24	11.0"OD x 3.7"H	--
BH3PG-213	120V	26W	Opal PC	2 x 13W GU24	11.0" x 11.0" x 3.7"	--

- * GU24 Bulb CT Option: 2700K, 4000K

OUTDOOR LIGHT



- * Housing: Die-formed cold-rolled steel
- * Shade: Injected Semi-clear acrylic or frosted glass
- * Built in with or without photo cell
- * Wet location rated
- * 5 years warranty on driver and LED module
- * Certification:UL / cUL, ETL / cETL, Energy Star



3-0103



3-0103D-A



3-0102

LED TYPE

Model	Input Voltage	Input Wattage	LED CT	Lumen (typ)	Shade	Dimension (L x W x H)	Energy Star
3-0102D-xxxxK	120V	15W	3000K	1300	Acrylic	10.5" x 6.0" x 4.2"	YES
3-0103D-xxxxK	120V	15W	3000K	1300	Acrylic	13.2" x 4.5" x 3.5"	YES
3-0103D-A-xxxxK	120V	15W	3000K	920	Acrylic	14.0" x 5.0" x 2.8"	YES

* Lumen (typ): Tested with 3000K CT

* More Color Temperature Option: 4000K, 5000K

GU24 CFL TYPE

Model	Input Voltage	Input Wattage	Shade	Lamp	Dimension (L x W x H)	Energy Star
3-0102PG-118	120V	18W	Acrylic	1 x 18W GU24	10.5" x 6.0" x 4.2"	--
3-0103PG-118	120V	18W	Acrylic	1 x 18W GU24	13.2" x 4.5" x 3.5"	--

* GU24 Bulb CT Option: 2700K, 4000K

OUTDOOR LIGHT

JA8 model - 3-4082D-3000K



- * Housing: Die-cast aluminum with powder coated finish
- * High power factor, low THD
- * Built in with or without photo cell
- * 5 years warranty on driver and LED module
- * Certification:UL / cUL, ETL / cETL, Energy Star
- * More Color Temperature Option: 4000K, 5000K



3-4082



3-4161



3-4098



3-4091

LED TYPE

Model	Input Voltage	Input Wattage	LED CT	Lumen (typ)	Shade	Dimension (H x W x E)	Energy Star
3-4082D-xxxxK	120V	15W	3000K	850	PC	9.8" x 7.8" x 4.2"	YES
3-4082D-xxxxK-11W	120V	11W	3000K	500	PC	9.8" x 7.8" x 4.2"	YES
3-4082D-3000K(JA8)	120V	15W	3000K	680	PC	9.8" x 7.8" x 4.2"	--
3-4098D-xxxxK	120V	15W	3000K	800	PC	12.1" x 10.1" x 4.8"	YES
3-4098D-xxxxK-11W	120V	11W	3000K	500	PC	12.1" x 10.1" x 4.8"	YES
3-4161D-xxxxK	120V	15W	3000K	950	Glass	10.0" x 10.0" x 5.0"	YES

- * Lumen (typ): Tested with 3000K CT
- * More Color Temperature Option: 4000K, 5000K
- * Finish Option: -06 White

GU24 CFL TYPE

Model	Input Voltage	Input Wattage	Finish	Shade	Lamp	Dimension (L x W x H)	Energy Star
3-4082PG-05	120V	18W	Black	PC	1 x 18W GU24	9.8" x 7.8" x 4.2"	--
3-4098PG-05	120V	18W	Black	PC	1 x 18W GU24	12.1" x 10.1" x 4.8"	--
3-4091PG-05	120V	18W	Black	PC	1 x 18W GU24	14.1" x 10.1" x 4.8"	--
3-4161PG-05	120V	18W	Black	Glass	1 x 18W GU24	10.0" x 10.0" x 5.0"	--

- * GU24 Bulb CT Option: 2700K, 4000K

OUTDOOR LIGHT



- * Housing: Die-cast aluminum with powder coated finish
- * High power factor, low THD
- * Built in with or without photo cell
- * 5 years warranty on driver and LED module
- * Certification:UL / cUL, ETL / cETL, Energy Star



3-4001



3-4081



3-4041



JJ3

LED TYPE

Model	Input Voltage	Input Wattage	LED CT	Lumen (typ)	Shade	Dimension (H x W x E)	Energy Star
3-4001D-05-xxxxK	120V	13W	3000K	580	Glass	14.0" x 6.5" x 7.2"	YES
3-4001D-05-xxxxK-11W	120V	11W	3000K	550	Glass	14.0" x 6.5" x 7.2"	YES
3-4081D-05-xxxxK	120V	13W	3000K	560	Glass	16.5" x 8.1" x 8.5"	YES
3-4081D-05-xxxxK-11W	120V	11W	3000K	630	Glass	16.5" x 8.1" x 8.5"	YES
3-4041D-05-xxxxK	120V	13W	3000K	540	Glass	14.8" x 6.1" x 9.1"	YES
3-4041D-05-xxxxK-11W	120V	11W	3000K	540	Glass	14.8" x 6.1" x 9.1"	YES
JJ3D-xxxxK	120V	11W	3000K	500	Opal PC	7.7" x 4.3" x 6.0"	YES

- * Lumen (typ): Tested with 3000K CT
- * More Color Temperature Option: 4000K, 5000K
- * Finish Option: -06 White

GU24 CFL TYPE

Model	Input Voltage	Input Wattage	Lamp	Lumen (typ) / Finish	Shade	Dimension (H x W x E)	Energy Star
3-4001PG-05	120V	18W	1 x 18W GU24	Black	Glass	14.0" x 6.5" x 7.2"	--
3-4041PG-05	120V	18W	1 x 18W GU24	Black	Glass	14.8" x 6.1" x 9.1"	--
3-4081PG-05	120V	18W	1 x 18W GU24	Black	Glass	16.5" x 8.1" x 8.5"	--
JJ3D-E	120V	9W	GU24 LED Bulb	820LM	Opal PC	7.7" x 4.3" x 6.0"	--

- * GU24 LED Bulb Option: 3000K or 4000K
- * GU24 CFL Bulb CT Option: 2700K, 4000K
- * Finish Option: -05 Black, -06 White

LED OUTDOOR LIGHT

- * Housing: Die-cast aluminum with powder coated finish
- * High power factor, low THD
- * Built in with or without photo cell
- * 5 years warranty on driver and LED module
- * Certification: ETL / cETL



3-6001D-P-E



3-6001D-PD-E



3-6001D-1-E

Model	Input Voltage	Input Wattage	LED	Lumen (typ)	Shade	Dimension (H x W x E)
3-6001D-P-E	120V	9W	LED Bulb	820	Glass	19.2" x 8.0" x 8.0"
3-6001D-PD-E	120V	9W	LED Bulb	820	Glass	11.0" x 8.0" x 60"
3-6001D-1-E	120V	9W	LED Bulb	820	Glass	13.8" x 8.0" x 8.0"

- * 3-6001D-PD-E: 5ft Chain
- * GU24 LED Bulb CT Option: 3000K or 4000K
- * Finish Option: -05 Black, -06 White

OUTDOOR CEILING MOUNT / WALL MOUNT FIXTURE

- * Housing: Die-cast aluminum with powder coated finish
- * High power factor, low THD
- * Built in with or without photo cell
- * 5 years warranty on driver and LED module
- * Certification:UL / cUL, ETL / cETL, Energy Star



3-4121D



3-3363D



3-3383D



3-3383D-A

LED TYPE

Model	Input Voltage	Input Wattage	LED CT	Lumen (typ)	Finish / Shade	Dimension (H x W x E)	Energy Star
3-4121D-05-xxxxK	120V ~ 277V	22W	3000K	1470	Black / PC	12.8"OD x 3.8"H	YES
3-3363D-05-xxxxK	120V	15W	3000K	800	Black / PC	12.8"OD x 3.8"H	YES
3-3383D-05-xxxxK	120V	15W	3000K	850	Black / PC	11.3" x 7.0" x 3.7"	YES
3-3383D-A-05-xxxxK	120V	15W	3000K	800	Black / PC	11.3" x 7.0" x 3.7"	YES

- * Lumen (typ): Tested with 3000K CT
- * More Color Temperature Option: 3500K, 4000K, 5000K
- * Finish Option: -06 White, 08 Gray

GU24 CFL TYPE

Model	Input Voltage	Finish	Shade	Lamp	Dimension (H x W x E)
3-4121-05	120V	Black	Opal Polycarbonate	2 x 13W GU24	12.8"OD x 3.8"H
3-3363-05	120V	Black	Opal Polycarbonate	2 x 13W GU24	12.8"OD x 3.8"H
3-3383-05	120V	Black	Opal Polycarbonate	1 x 18W GU24	11.3" x 7.0" x 3.7"
3-3383-A-05	120V	Black	Opal Polycarbonate	1 x 18W GU24	11.3" x 7.0" x 3.7"

- * GU24 CFL Bulb CT Option: 2700K, 4000K
- * GU24 LED Bulb Option: 9W LED Bulb, 3000K or 4000K

OUTDOOR FIXTURE

JA8 model - 3-4310D

- * Housing: Die-cast aluminum with powder coated finish
- * High power factor, low THD
- * Built in with or without photo cell
- * 5 years warranty on driver and LED module
- * Certification:UL / cUL, ETL / cETL, Energy Star



3-4111D



3-4111D-A



3-4310D-05



3-4310D-08

LED TYPE

Model	Input Voltage	Input Wattage	LED CT	Lumen (typ)	Finish/ Shade	Dimension (H x W x E)	Energy Star
3-4111D-05-xxxxK	120V ~ 277V	23W	3000K	1080	Black / PC	11.8" x 11.8" x 3.4"	YES
3-4111D-05-xxxxK-A	120V ~ 277V	23W	3000K	1080	Black / PC	11.8" x 11.8" x 3.4"	YES
3-4310D-05-xxxxK	120V	15W	3000K	990	Black / PC	14.1" x 10.0" x 5.7"	YES
3-4310D-08-xxxxK	120V	15W	3000K	990	Gray / PC	14.1" x 10.0" x 5.7"	YES
3-4310D-05 (JA8)	120V	15W	3000K	925	Black / PC	14.1" x 10.0" x 5.7"	--
3-4310D-08 (JA8)	120V	15W	3000K	925	Gray / PC	14.1" x 10.0" x 5.7"	--

- * Lumen measured with 3000K CT LED
- * More Color Temperature Option: 3500K, 4000K, 5000K
- * Finish Option: -06 White, -08 Gray, -03 Stainless Steel

GU24 CFL TYPE

Model	Input Voltage	Finish	Shade	Lamp	Dimension (Hx W x E)
3-4111-05	120V	Black	Opal Polycarbonate	2 x 13W GU24	11.8" x 11.8" x 3.4"
3-4310-05	120V	Black	Opal Polycarbonate	2 x 13W GU24	14.1" x 10.0" x 5.7"

- * Finish Option: -06 White, -08 Gray, -03 Stainless Steel
- * GU24 CFL Bulb CT Option: 2700K, 4000K
- * GU24 LED Bulb Option: 9W LED Bulb, 3000K or 4000K

OUTDOOR WALL MOUNT FIXTURE



- * Housing: Die-cast aluminum with powder coated finish
- * High power factor, low THD
- * Built in with or without photo cell
- * 5 years warranty on driver and LED module
- * Certification:UL / cUL, ETL / cETL, Energy Star



3-1843D



3-4311D



3-4031D



3-4311D-L

LED TYPE

Model	Input Voltage	Input Wattage	LED CT	Lumen (typ)	Housing / Shade	Dimension (H x W x E)	Energy Star
3-1843D-xxxxK	120V ~ 277V	25W	3000K	1290	Aluminum / PC	9.8" x 7.8" x 3.8"	YES
3-4031D-xxxxK	120V	15W	3000K	1150	Opal PC	10.9" x 7.5" x 3.7"	--
3-4311D-05-xxxxK	120V	15W	3000K	960	Steel / Glass	9.1" x 6.7" x 4.4"	YES
3-4311D-05-xxxxK-11W	120V	11W	3000K	600	Steel / Glass	9.1" x 6.7" x 4.4"	YES
3-4311D-05-L-xxxxK	120V	15W	3000K	960	Steel / Glass	12.0" x 10.0" x 4.0"	YES

- * Lumen measured with 3000K CT LED
- * More Color Temperature Option: 3500K, 4000K, 5000K
- * Finish Option: -05 Black, -06 White, -08 Gray

GU24 CFL TYPE

Model	Input Voltage	Finish	Lamp	Shade	Dimension (L x W x H)	Energy Star
3-1843-05	120V	Black	1 x 18W GU24	Opal Polycarbonate	9.8" x 7.8" x 3.8"	--
3-4311-118-05	120V	Black	1 x 18W GU24	Frosted Glass	9.1" x 6.7" x 4.4"	--

- * Finish Option: -05 Black, -06 White
- * GU24 LED Bulb Option: 9W LED Bulb, 3000K or 4000K
- * GU24 CFL Bulb CT Option: 2700K, 4000K

LED OUTDOOR WALL MOUNT FIXTURE

- * Housing: Die-cast aluminum with powder coated finish
- * High power factor, low THD
- * Built in with or without photo cell
- * 5 years warranty on driver and LED module
- * Certification: ETL / cETL, Energy Star



3-4048D-A



3-4046D-A



3-4048D



3-4046D

Model	Input Voltage	Input Wattage	LED CT/ CRI	Lumen (typ)	Finish	Dimension (H x W x E)	Energy Star
3-4046D-05-xxxxK	120V ~ 277V	18W	3000K / 80	1500	Black	12.0" x 4.5" x 7.0"	YES
3-4048D-05-xxxxK	120V ~ 277V	9W	3000K / 80	750	Black	8.0" x 4.5" x 7.0"	YES
3-4046D-A-30-xxxxK	120V ~ 277V	18W	3000K / 80	1500	ORB	12.0" x 4.5" x 6.5"	YES
3-4048D-A-30-xxxxK	120V ~ 277V	9W	3000K / 80	750	ORB	6.3" x 4.5" x 6.5"	YES

- * Lumen (typ): Tested with 3000K CT
- * Color Temperature Option (-xxxxK): 3000K, 3500K, 4000K, 5000K
- * Finish Option: -30 Oil Rubbed Bronze, -05 Black

LED OUTDOOR WALL PACK

- * Housing: Die-formed cold-rolled steel / Epoxy powder coating
- * Shade: High transmission acrylic creates excellent light distribution and uniformity
- * LED: High efficiency, high CRI, binned and mixed to reach uniform light
- * 5 years warranty on driver and LED module
- * Certification: ETL / cETL



Model	Input Voltage	Input Wattage	LED CT	Lumen (typ)	Finish	Shade	Dimension (H x W x E)
WP7-A-05-18W-3000K	120V ~ 277V	15W	3000K	665	Black	Acrylic	13.3" x 8.3" x 3.8"
WP8-A-05-23W-3000K	120V ~ 277V	23W	3000K	1290	Black	Acrylic	21.7" x 8.3" x 3.8"
WP9-A-05-34W-3000K	120V ~ 277V	34W	3000K	2110	Black	Acrylic	30.0" x 8.3" x 3.8"

- * Bi-level light option: -Bi
- * Emergency back up light option: -EM
- * More Color Temperature Option: 4000K

LED OUTDOOR WALL PACK

* Housing: Die-cast aluminum with powder coated finish

* Dark Sky compliant fixture - WP164B

* UL /cUL wet location listed



WP11A



3-4182D



WPGR



WP3A

Model	Input Voltage	Input Wattage	LED CT	Lumen (typ)	Finish	Shade	Dimension (H x W x E)	DLC
WP11A-20	120V ~ 277V	20W	5000K	2500	Black	Polycarbonate	9.6" x 8.0" x 3.6"	YES
3-4182D-3000K	120V ~ 277V	15W	3000K	550	Black	Polycarbonate	9.9" x 4.9" x 4.5"	YES
WPGR45HU50K	120V ~ 277V	45W	5000K	4500	Black	Tempered Glass	14.3" x 9.1" x 7.4"	YES
WPGR60HU50K	120V ~ 277V	60W	5000K	6300	Black	Tempered Glass	14.3" x 9.1" x 7.4"	YES
WP3A	120V ~ 277V	50W	5000K	4500	Black	Polycarbonate	18.2" x 9.0" x 9.4"	--

* WPGR45HU50K & WPGR60HU50K - Bi-Level Light Option, -Bi

* Photo Cell Option: -PC

* More Color Temperature Option: 3000K, 4000K

LED CANOPY / PARKING GARAGE LIGHT

- * Housing: Die-cast aluminum with powder coated finish
- * Polycarbonate Shade
- * IP65, wet location
- * ETL / cETL



CP01A



CM2-A



CM2

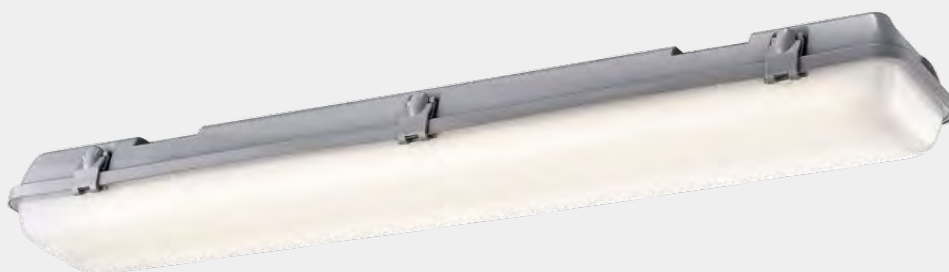
Model	Input Voltage	Input Wattage	LED CT	Lumen (nom)	Finish	Shade	Dimension (L x W x H)
CP01A-50W	120V ~ 277V	48W	5000K	4100	Black	Clear Polycarbonate	10.4" x 10.4" x 3.8"
CM2-48W	120V ~ 277V	48W	5000K	4100	Black	Clear Polycarbonate	12.4" x 12.4" x 9.0"
CM2-23W-A	120V ~ 277V	28W	5000K	2550	Black	Opal Polycarbonate	12.4" x 12.4" x 6.0"
CM2-48W-A	120V ~ 277V	48W	5000K	4100	Black	Opal Polycarbonate	12.4" x 12.4" x 6.0"

LED VAPOR TIGHT

***** Built-in Emergency Lighting *****

***** Bi-Level Lighting *****

- * Housing: Injection molded polycarbonate
- * Shade: Injection molded high transmission opal polycarbonate
creates excellent light distribution and uniformity
- * Stainless steel clips
- * Built-in constant current LED driver with high efficient LED module
- * High luminous efficacy > 100lm/W
- * Ideal for harsh environment applications
- * Suitable for ceiling mount or suspended mount
- * 5 years warranty
- * ETL / cETL, DLC listed



Model	Input Voltage	Input Wattage	LED CT	CRI	Lumen (typ)	Dimension (L x W x H)	DLC
BH24DX-16W-4000K	120V ~ 277V	16W	4000K	80	1880	26.5" x 4.3" x 2.4"	Standard
BH24DX-16W-5000K	120V ~ 277V	16W	5000K	80	1970	26.5" x 4.3" x 2.4"	Standard
BH48DX-36W-4000K	120V ~ 277V	34W	4000K	80	3490	50.0" x 4.3" x 2.4"	Standard
BH48DX-36W-5000K	120V ~ 277V	34W	5000K	80	3650	50.0" x 4.3" x 2.4"	Standard
BH24DX-HE-4000K	120V ~ 277V	23W	4000K	80	2520	26.5" x 4.3" x 2.4"	Standard
BH24DX-HE-5000K	120V ~ 277V	23W	5000K	80	2650	26.5" x 4.3" x 2.4"	Standard
BH48DX-HE-4000K	120V ~ 277V	45W	4000K	80	4950	50.0" x 4.3" x 2.4"	Standard
BH48DX-HE-5000K	120V ~ 277V	45W	5000K	80	5200	50.0" x 4.3" x 2.4"	Standard
BH24DX-VHO-4000K	120V ~ 277V	15W	4000K	80	1880	26.5" x 4.3" x 2.4"	Premium
BH24DX-VHO-5000K	120V ~ 277V	15W	5000K	80	1905	26.5" x 4.3" x 2.4"	Premium
BH48DX-VHO-4000K	120V ~ 277V	29W	4000K	80	3760	50.0" x 4.3" x 2.4"	Premium
BH48DX-VHO-5000K	120V ~ 277V	29W	5000K	80	3900	50.0" x 4.3" x 2.4"	Premium

* -Bi: Bi-Level Light with built-in high frequency motion sensor

* -EM: Built-in Emergency Battery Back Up

LED VAPOR TIGHT - WITH LED TUBE

- * Housing: Injection molded PC with die-formed cold-rolled steel reflector
- * Shade: Injection molded polycarbonate
- * Stainless steel clips
- * Ideal for harsh environment applications
- * Suitable for ceiling mount or suspended mount
- * ETL / cETL
- * DLC listed LED T8 tube - > 100lm/W



LED TYPE - WITH DLC LISTED LED TUBE - UL LISTED

Model	Input Voltage	Input Wattage	T8 LED Tube	Lumen (typ)	LED CT / CRI	Housing / Shade	Dimension (L x W x H)
BH24D-20W-4000K	120V ~ 277V	20W	2 x 10W	1980	4000K / 80	Polycarbonate	26.5" x 6.5" x 4.5"
BH24D-20W-5000K	120V ~ 277V	20W	2 x 10W	2060	5000K / 80	Polycarbonate	26.5" x 6.5" x 4.5"
BH48D-36W-4000K	120V ~ 277V	36W	2 x 18W	3565	4000K / 80	Polycarbonate	50.0" x 6.5" x 4.5"
BH48D-36W-5000K	120V ~ 277V	36W	2 x 18W	3670	5000K / 80	Polycarbonate	50.0" x 6.5" x 4.5"
BH48D-44W-4000K	120V ~ 277V	44W	2 x 22W	4355	4000K / 80	Polycarbonate	50.0" x 6.5" x 4.5"
BH48D-44W-5000K	120V ~ 277V	44W	2 x 22W	4490	5000K / 80	Polycarbonate	50.0" x 6.5" x 4.5"

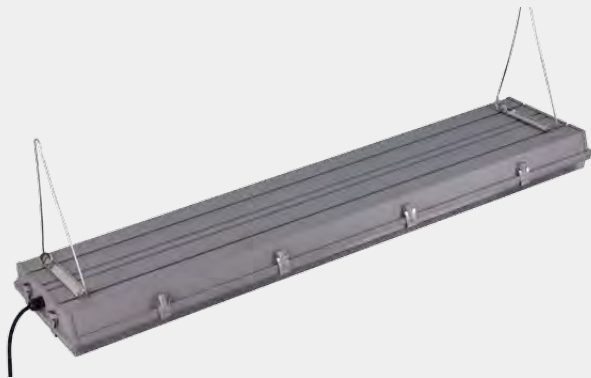
VAPOR TIGHT - T8 & T5 HO LAMP TYPE

- * T8 Ballast: Universal input 120V ~ 277V
- * T5 HO Ballast: Programmable start, 120V ~ 277V
- * UL / cUL listed

Model	Input Voltage	Wattage	Reflector	Lamp	Shade	Dimension (L x W x H)
BH24-217	120V ~ 277V	34W	White	2 x F17T8, 17W	Polycarbonate	26.5" x 6.5" x 4.5"
BH48-132	120V ~ 277V	32W	White	1 x F32T8, 32W	Polycarbonate	50.0" x 4.0" x 4.5"
BH48-232	120V ~ 277V	56W	White	2 x F32T8, 32W	Polycarbonate	50.0" x 6.5" x 4.5"
BH48-254	120V ~ 277V	110W	White	2 x F54T5HO, 54W	Polycarbonate	50.0" x 6.5" x 4.5"

4 LAMPS VAPOR TIGHT

- * Housing: Aluminum die casting / extrusion
- * Reflector: High reflection type aluminum reflector
- * Ideal for harsh environment applications
- * Suitable for ceiling mount or suspended mount
- * High ballast factor ballast - Max. light output
- * UL / cUL



LED TYPE - WITH DLC LISTED LED TUBE - UL LISTED

Model	Input Voltage	Input Wattage	T8 LED Tube	Lumen (typ)	T8 CT / CRI	Shade	Dimension (L x W x H)
BH48D-72W-4000K	120V ~ 277V	72W	4 x 18W	8500	4000K / 80	Polycarbonate	50.2" x 12.2" x 4.0"
BH48D-72W-5000K	120V ~ 277V	72W	4 x 18W	8500	5000K / 80	Polycarbonate	50.2" x 12.2" x 4.0"

T8 LAMP TYPE

Model	Input Voltage	Wattage	Reflector	Lamp	Shade	Dimension (L x W x H)
BH48-432	120V ~ 277V	145W	Specular reflector	4 x F32T8, 32W	Polycarbonate	50.2" x 12.2" x 4.0"

LED VAPOR TIGHT - 2FT / 4FT / 8FT

***** Bi-Level Lighting *****

- * Housing: Injection molded polycarbonate
- * Shade: High transmission opal polycarbonate creates excellent light distribution and uniformity
- * Built-in constant current LED driver with high efficient LED module
- * High luminous efficacy > 110lm/W
- * Suitable for ceiling mount or suspended mount
- * 5 years warranty
- * UL / cUL, DLC listed



Model	Input Voltage	Input Wattage	LED CT	CRI	Lumen (typ)	Dimension (L x W x H)	DLC
TP20W-2FT-3000K	120V ~ 277V	20W	3000K	82	2330	23.6" x 3.7" x 2.4"	YES
TP20W-2FT-4000K	120V ~ 277V	20W	4000K	82	2330	23.6" x 3.7" x 2.4"	YES
TP20W-2FT-5000K	120V ~ 277V	20W	5000K	82	2400	23.6" x 3.7" x 2.4"	YES
TP36W-4FT-3000K	120V ~ 277V	36W	3000K	82	4230	47.2" x 3.7" x 2.4"	YES
TP36W-4FT-4000K	120V ~ 277V	36W	4000K	82	4400	47.2" x 3.7" x 2.4"	YES
TP36W-4FT-5000K	120V ~ 277V	36W	5000K	82	4600	47.2" x 3.7" x 2.4"	YES
TP45W-4FT-3000K	120V ~ 277V	42.5W	3000K	82	5000	47.2" x 3.7" x 2.4"	YES
TP45W-4FT-4000K	120V ~ 277V	42.5W	4000K	82	5000	47.2" x 3.7" x 2.4"	YES
TP45W-4FT-5000K	120V ~ 277V	42.5W	5000K	82	5300	47.2" x 3.7" x 2.4"	YES
TP70W-8FT-3000K	120V ~ 277V	70W	3000K	82	7900	94.5" x 3.7" x 2.4"	YES
TP70W-8FT-4000K	120V ~ 277V	70W	4000K	82	7900	94.5" x 3.7" x 2.4"	YES
TP70W-8FT-5000K	120V ~ 277V	70W	5000K	82	8400	94.5" x 3.7" x 2.4"	YES

* -Bi: Bi-level light

LED VAPOR TIGHT

BH48DX-82W

- * Housing: Injection molded, light grey polycarbonate
- * Diffuser: Injection molded, UV stabile transparent or opal polycarbonate
- * UL approved constant current LED driver
- * LED CT: 3000K or 4000K or 5000K or 6400K
- * CRI > 80
- * Mounting bracket: Stainless steel
- * Installation: Ceiling mount or hanging mount with 3 Ft suspension chain
- * IP 65 rated
- * UL listed
- * Warranty: 5 Years on LED and LED driver



Model	Input Voltage	Input Wattage	Lens	LED CT	Lumen (typ)	Dimension (L x W x H)
BH48DX-C-82W-4000K	120V ~ 277V	82W	Clear	4000K	9500	49.80" x 9.45" x 4.33"
BH48DX-C-82W-5000K	120V ~ 277V	82W	Clear	5000K	9500	49.80" x 9.45" x 4.33"
BH48DX-C-82W-6400K	120V ~ 277V	82W	Clear	6400K	9500	49.80" x 9.45" x 4.33"
BH48DX-F-82W-4000K	120V ~ 277V	82W	Frosted	4000K	9500	49.80" x 9.45" x 4.33"
BH48DX-F-82W-5000K	120V ~ 277V	82W	Frosted	5000K	9500	49.80" x 9.45" x 4.33"

LED VAPOR TIGHT



***** Built-in Emergency Lighting *****

***** Bi-Level Lighting *****

- * Housing: Injection molded polycarbonate
- * Shade: Injection molded polycarbonate
- * Ideal for harsh environment applications
- * Suitable for ceiling mount or wall mount
- * Wet location rated
- * ETL / cETL , Energy Star



C023-A / C034-A



C023 / C034

Model	Input Voltage	Input Wattage	LED CT	CRI	Lumen (Typ)	Dimension (ODxH)	Energy Star
C023-65-xxxxK	120V ~ 277V	23W	3000K/	> 80	2100	14.3" x 5.7"	YES
C034-65-xxxxK	120V ~ 277V	34W	3500K/	> 80	2380	17.7" x 5.7"	YES
C023-65-A-xxxxK	120V ~ 277V	23W	4000K/	> 80	2100	14.3" x 5.7"	YES
C034-65-A-xxxxK	120V ~ 277V	34W	5000K	> 80	2380	17.7" x 5.7"	YES

- * Lumen (typ): Tested with 3000K CT
- * Color Temperature Option (-xxxxK): 3000K, 3500K, 4000K, 5000K
- * -Bi: Bi-Level Light with built-in high frequency motion sensor
- * -EM: Built-in Emergency Battery Back Up

UNDER THE COUNTER LIGHT

- * Housing: Die-formed cold-rolled steel
- * Low Profile - Suitable for tight space
- * Shade: Acrylic diffuser
- * Certification: UL / cUL, ETL / cETL



Model	Input Voltage	Wattage	Lamp	Lamp CT	Shade	Dimension (L x W x H)
FL1001	120V	8W	F8T5, 8W	4100K	Acrylic	11.8" x 3.5" x 1.0"
FL1002	120V	13W	F13T5, 13W	4100K	Acrylic	21.3" x 3.5" x 1.0"
FL1003	120V	16W	F8T5, 8W x 2	4100K	Acrylic	24.5" x 3.5" x 1.0"
FL1004	120V	21W	F8T5,8W + F13T5,13W	4100K	Acrylic	33.1" x 3.5" x 1.0"
FL1005	120V	24W	F13T5, 13W x 2	4100K	Acrylic	42.5" x 3.5" x 1.0"

LINKABLE LED TYPE

Model	Input Voltage	Wattage	Lumen	LED CT / CRI	Shade	Dimension (L x W x H)
UC8001-12	120V	7.5W	320	4000K / 90	Acrylic	11.0" x 3.5" x 1.0"
UC8001-24	120V	11W	600	4000K / 90	Acrylic	24.0" x 3.5" x 1.0"
UC8001-33	120V	15W	820	4000K / 90	Acrylic	33.0" x 3.5" x 1.0"

* More Color Temperature Option: 3000K

LED UNDER THE COUNTER FIXTURE - LINKABLE TYPE

- * Low Profile - Suitable for tight space
- * Shade: Acrylic diffuser
- * Certification: ETL / cETL



Model	Input Voltage	Wattage	Lumen	LED CT	Housing / Shade	Dimension (L x W x H)
C004-51	120V	4W	360	5000K	PC / Acrylic	13.5" x 0.9" x 1.7"
C007-51	120V	7W	630	5000K	PC / Acrylic	22.5" x 0.9" x 1.7"
C008-51	120V	8W	720	5000K	PC / Acrylic	23.7" x 0.9" x 1.7"
C014-51	120V	14W	1260	5000K	PC / Acrylic	35.6" x 0.9" x 1.7"
C018-51	120V	18W	1620	5000K	PC / Acrylic	47.4" x 0.9" x 1.7"



Length 4"-24" (6" Model shown)



LINKABLE CABLE FOR LED MODEL

Model	Length	Model	Length
C51-6	6"	C51-18	18"
C51-12	12"	C51-24	24"

J-BOX FOR LED MODEL

Model	Dimension (L x W x H)
J-BOX	4.0" x 2.2" x 1.5"

WRAPAROUND

- * Housing: Die-formed cold-rolled steel
- * Shade: Prismatic acrylic
- * Certification: UL / cUL or ETL / cETL, integrated linear LED module



WITH INTEGRATED LED STRIPS

Model	Input Voltage	Input Wattage	Lumen (typ)	LED CT / CRI	Dimension (L x W x H)	DLC
200WRD1-36W-xxxxK	120V ~ 277V	38W	3600	4000K / >80	49.5" x 8.8" x 2.5"	YES
300WRD1-50W-xxxxK	120V ~ 277V	50W	5000	4000K / >80	49.0" x 11.2" x 2.5"	--
300WRD1-72W-xxxxK	120V ~ 277V	72W	7200	4000K / >80	49.0" x 11.2" x 2.5"	--

* Lumen tested with 4000K CT

* Color Temperature: 4000K or 5000K

WITH DLC LISTED LED TUBE

Model	Input Voltage	Input Wattage	LED tube	Tube Lumen	Dimension (L x W x H)
100WRD-36W	120V ~ 277V	36W	2 x 18W	4400	49.0" x 6.5" x 2.5"
200WRD-36W	120V ~ 277V	36W	2 x 18W	4400	49.5" x 8.8" x 2.5"
300WRD-72W	120V ~ 277V	72W	4 x 18W	8800	49.0" x 11.2" x 2.5"

* Color Temperature: 3000K or 4000K or 5000K

WITH T8 LAMP

Model	Input Voltage	Input Wattage	Power Factor	Lamp	Dimension (L x W x H)
100WR HPF	120V ~ 277V	58W	> 0.98	2 x F32T8, 32W	49.0" x 6.5" x 2.5"
200WR HPF	120V ~ 277V	58W	> 0.98	2 x F32T8, 32W	49.5" x 8.8" x 2.5"
300WR HPF	120V ~ 277V	106W	> 0.98	4 x F32T8, 32W	49.0" x 11.2" x 2.5"

LED WRAPAROUND

***** Built-in Emergency Lighting *****

***** Bi-Level Lighting *****

* Housing: Die-formed cold-rolled steel

* Shade: Prismatic acrylic

* Certification: ETL / cETL, integrated linear LED module



Model	Input Voltage	Input Wattage	Lumen	LED CT / CRI	Dimension (L x W x H)
150WRD-40W-830	120V ~ 277V	40W	5500	3000K / 80	46.5" x 4.12" x 3.64"
150WRD-40W-840	120V ~ 277V	40W	5750	4000K / 80	46.5" x 4.12" x 3.64"



BI-LEVEL DIMMING WITH BUILT-IN SENSOR

Model	Input Voltage	Input Wattage	Lumen	LED CT / CRI	Dimension (L x W x H)
150WRD-BI	120V ~ 277V	40W	5500	3000K / 80	46.5" x 4.12" x 3.64"
200WRD1-BI	120V ~ 277V	36W	3600	3000K / 80	49.5" x 8.8" x 2.5"

BUILT-IN EMERGENCY BATTERY BACK UP TYPE

Model	Input Voltage	Input Wattage	Lumen	LED CT / CRI	Dimension (L x W x H)
150WRD-EM	120V ~ 277V	40W	5500	3000K / 80	46.5" x 4.12" x 3.64"
200WRD1-EM	120V ~ 277V	36W	3600	3000K / 80	49.5" x 8.8" x 2.5"

LED STRIP RE-TROFIT KIT

***** Re-trofit Standard T8 Fluorescent Lamp Strip *****

***** Built-in Emergency Lighting *****

***** Bi-Level Lighting *****

- * Housing: Die-formed cold-rolled steel
- * Shade: High transmission acrylic creates excellent light distribution and uniformity
- * LED: High efficiency, high CRI, binned and mixed to reach uniform light
- * LED: Integrate LED module with high CRI
- * 5 years warranty on driver and LED module
- * Certification: ETL / cETL, DLC



Model	Input Voltage	Input Wattage	Lumen (typ)	LED CT	CRI	Dimension (L x W x H)	DLC
RT-24ST-HE-4000K	120V ~ 277V	23W	3205	4000K	>80	24.0" x 4.4" x 1.8"	Premium
RT-24ST-HE-5000K	120V ~ 277V	23W	3290	5000K	>80	24.0" x 4.4" x 1.8"	Premium
RT-48ST-HE-36W-4000K	120V ~ 277V	34W	4170	4000K	>80	48.0" x 4.4" x 1.8"	Standard
RT-48ST-HE-36W-5000K	120V ~ 277V	34W	4190	5000K	>80	48.0" x 4.4" x 1.8"	Standard
RT-48ST-HE-48W-4000K	120V ~ 277V	46W	6405	4000K	>80	48.0" x 4.4" x 1.8"	Premium
RT-48ST-HE-48W-5000K	120V ~ 277V	46W	6578	5000K	>80	48.0" x 4.4" x 1.8"	Premium
RT-48ST-VHO-36W-4000K	120V ~ 277V	31W	3980	4000K	>80	48.0" x 4.4" x 1.8"	Premium
RT-48ST-VHO-36W-5000K	120V ~ 277V	31W	4010	5000K	>80	48.0" x 4.4" x 1.8"	Premium

LED STRIP

- * Housing: Die-formed cold-rolled steel
- * Shade: High transmission acrylic creates excellent light distribution and uniformity
- * LED: High efficiency, high CRI, binned and mixed to reach uniform light
- * LED: Integrate LED module with high CRI
- * 5 years warranty on driver and LED module
- * Certification: ETL / cETL, DLC



Model	Input Voltage	Input Wattage	Lumen (typ)	LED CT	CRI	Dimension (L x W x H)	DLC
624STD1-HE-4000K	120V ~ 277V	23W	2620	4000K	>80	24.0" x 4.4" x 3.3"	Standard
624STD1-HE-5000K	120V ~ 277V	23W	2630	5000K	>80	24.0" x 4.4" x 3.3"	Standard
648STD1-HE-36W-4000K	120V ~ 277V	34W	4170	4000K	>80	48.0" x 4.4" x 3.3"	Standard
648STD1-HE-36W-5000K	120V ~ 277V	34W	4170	5000K	>80	48.0" x 4.4" x 3.3"	Standard
648STD1-HE-48W-4000K	120V ~ 277V	45W	5300	4000K	>80	48.0" x 4.4" x 3.3"	Standard
648STD1-HE-48W-5000K	120V ~ 277V	45W	5300	5000K	>80	48.0" x 4.4" x 3.3"	Standard
624STD1-VHO-4000K	120V ~ 277V	15W	1850	4000K	>80	24.0" x 4.4" x 3.3"	Premium
624STD1-VHO-5000K	120V ~ 277V	15W	1900	5000K	>80	24.0" x 4.4" x 3.3"	Premium
648STD1-VHO-36W-4000K	120V ~ 277V	32W	4150	4000K	>80	48.0" x 4.4" x 3.3"	Premium
648STD1-VHO-36W-5000K	120V ~ 277V	32W	4220	5000K	>80	48.0" x 4.4" x 3.3"	Premium

LED STRIP

***** Built-in Emergency Lighting *****

***** Bi-Level Lighting *****

- * Housing: Die-formed cold-rolled steel
- * Shade: High transmission acrylic creates excellent light distribution and uniformity
- * LED: High efficiency, high CRI, binned and mixed to reach uniform light
- * LED: Integrate LED module with high CRI
- * 5 years warranty on driver and LED module
- * Certification: ETL / cETL, DLC



BI-LEVEL LIGHTS - WITH BUILT-IN HIGH FREQUENCY SENSOR

Model	Input Voltage	Input Wattage	LED CT	CRI	Lumen (typ)	Dimension (L x W x H)
624STD1-HE-Bi-xxxxK	120V ~ 277V	23W		>80	2380	24.0" x 4.4" x 3.3"
624STD1-VHO-Bi-xxxxK	120V ~ 277V	14W		>80	1800	24.0" x 4.4" x 3.3"
648STD1-HE-36W-Bi-xxxxK	120V ~ 277V	34W	4000K or 5000K	>80	4170	48.0" x 4.4" x 3.3"
648STD1-HE-48W-Bi-xxxxK	120V ~ 277V	45W		>80	5300	48.0" x 4.4" x 3.3"
648STD1-VHO-36W-Bi-xxxxK	120V ~ 277V	32W		>80	4150	48.0" x 4.4" x 3.3"

WITH BUILT-IN EMERGENCY BACK UP

Model	Input Voltage	Input Wattage	LED CT	CRI	Lumen (typ)	Dimension (L x W x H)
624STD1-HE-EM-xxxxK	120V ~ 277V	23W		>80	2380	24.0" x 4.4" x 3.3"
624STD1-VHO-EM-xxxxK	120V ~ 277V	14W		>80	1800	24.0" x 4.4" x 3.3"
648STD1-HE-36W-EM-xxxxK	120V ~ 277V	34W	4000K or 5000K	>80	4170	48.0" x 4.4" x 3.3"
648STD1-HE-48W-EM-xxxxK	120V ~ 277V	45W		>80	5300	48.0" x 4.4" x 3.3"
648STD1-VHO-36W-EM-xxxxK	120V ~ 277V	32W		>80	4150	48.0" x 4.4" x 3.3"

WITH BUILT-IN EMERGENCY BACK UP & BI-LEVEL LIGHTS

Model	Input Voltage	Input Wattage	LED CT	CRI	Lumen (typ)	Dimension (L x W x H)
624STD1-HE-EM-Bi-xxxxK	120V ~ 277V	23W		>80	2380	24.0" x 4.4" x 3.3"
624STD1-VHO-EM-Bi-xxxxK	120V ~ 277V	14W		>80	1800	24.0" x 4.4" x 3.3"
648STD1-HE-36W-EM-Bi-xxxxK	120V ~ 277V	34W	4000K or 5000K	>80	4170	48.0" x 4.4" x 3.3"
648STD1-HE-48W-EM-Bi-xxxxK	120V ~ 277V	45W		>80	5300	48.0" x 4.4" x 3.3"
648STD1-VHO-36W-EM-Bi-xxxxK	120V ~ 277V	32W		>80	4150	48.0" x 4.4" x 3.3"

T8 & T5HO LAMP STRIP

- * Housing: Die-formed cold-rolled steel
- * Ballast: 120V ~ 277V high power factor
- * Certification: UL / cUL, ETL / cETL



Model	Voltage	Wattage	Lamp	Dimension (L x W x H)
648ST-132 HPF	120V ~ 277V	29W	1 x F32 T8, 32W	48.00" x 2.80" x 3.40"
624ST-217 HPF	120V ~ 277V	34W	2 x F17 T8, 17W	24.00" x 4.40" x 3.40"
636ST-225 HPF	120V ~ 277V	50W	2 x F25 T8, 25W	36.00" x 4.40" x 3.40"
648ST-232 HPF	120V ~ 277V	58W	2 x F32 T8, 32W	48.00" x 4.40" x 3.40"
T5ST-124	120V ~ 277V	24W	1 x F24 T5HO, 24W	22.38" x 1.38" x 1.25"
T5ST-139	120V ~ 277V	39W	1 x F39 T5HO, 39W	34.25" x 1.38" x 1.25"
T5ST-154	120V ~ 277V	54W	1 x F54 T5HO, 54W	46.12" x 1.38" x 1.25"
T5ST-224	120V ~ 277V	48W	2 x F24 T5HO, 24W	22.38" x 2.38" x 1.25"
T5ST-239	120V ~ 277V	78W	2 x F39 T5HO, 39W	34.25" x 2.38" x 1.25"
T5ST-254	120V ~ 277V	108W	2 x F54 T5HO, 54W	46.12" x 2.38" x 1.25"

***** With Ballast Compatible Type Tube or By-Pass LED Tube *****

T8 LED TUBE TYPE - WITH DLC LISTED T8 LED TUBE

Model	Input Voltage	Input Wattage	T8 LED Tube	Tube Lumen (typ)	Dimension (L x W x H)
624STD-20W	120V ~ 277V	20W	2 x 10W	2200	24.0" x 4.4" x 3.4"
648STD-36W	120V ~ 277V	36W	2 x 18W	4400	48.0" x 4.4" x 3.4"

* Tube Color Temperature: 3000K or 4000K or 5000K

T5 LED TUBE TYPE - WITH DLC LISTED T5 LED TUBE

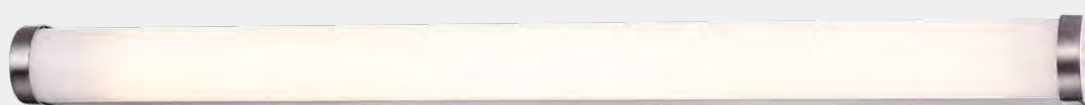
Model	Input Voltage	Input Wattage	T5 LED Tube	Tube Lumen (typ)	Dimension (L x W x H)
T5ST-56W	120V ~ 277V	62W	Ballast Compatible	7400	46.12" x 2.38" x 1.25"
T5ST-50W	120V ~ 277V	50W	Line Voltage Input	7000	46.12" x 2.38" x 1.25"

* Tube Color Temperature: 3000K or 4000K or 5000K

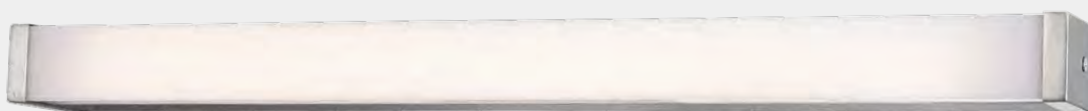
LED MINI STRIP



- * Housing: Aluminum extrusion with anodized finish
- * Shade: High transmission acrylic creates excellent light distribution and uniformity
- * LED: High efficiency, high CRI, binned and mixed to reach uniform light
- * 5 years warranty on driver and LED module
- * Certification: ETL / cETL , Energy Star



Model	Input Voltage	Input Wattage	LED CT/ CRI	Lumen (typ)	Finish	Dimensions (L x W x H)	Energy Star
FL0224D-ST-3000K	120V ~ 277V	11W	3000K / 80	935	Satin Nickel	22.0" x 1.7" x 2.7"	YES
FL0224D-ST-4000K	120V ~ 277V	11W	4000K / 80	980	Satin Nickel	22.0" x 1.7" x 2.7"	YES
FL0239D-ST-3000K	120V ~ 277V	18W	3000K / 80	1530	Satin Nickel	34.0" x 1.7" x 2.7"	YES
FL0239D-ST-4000K	120V ~ 277V	18W	4000K / 80	1600	Satin Nickel	34.0" x 1.7" x 2.7"	YES
FL0254D-ST-3000K	120V ~ 277V	23W	3000K / 80	1950	Satin Nickel	46.0" x 1.7" x 2.7"	YES
FL0254D-ST-4000K	120V ~ 277V	23W	4000K / 80	2050	Satin Nickel	46.0" x 1.7" x 2.7"	YES



Model	Input Voltage	Input Wattage	LED CT/ CRI	Lumen (typ)	Finish	Dimensions (L x W x H)	Energy Star
FL0324D-ST-3000K	120V ~ 277V	11W	3000K / 80	935	Satin Nickel	22.0" x 1.7" x 2.7"	YES
FL0324D-ST-4000K	120V ~ 277V	11W	4000K / 80	980	Satin Nickel	22.0" x 1.7" x 2.7"	YES
FL0339D-ST-3000K	120V ~ 277V	18W	3000K / 80	1530	Satin Nickel	34.0" x 1.7" x 2.7"	YES
FL0339D-ST-4000K	120V ~ 277V	18W	4000K / 80	1600	Satin Nickel	34.0" x 1.7" x 2.7"	YES
FL0354D-ST-3000K	120V ~ 277V	23W	3000K / 80	1950	Satin Nickel	46.0" x 1.7" x 2.7"	YES
FL0354D-ST-4000K	120V ~ 277V	23W	4000K / 80	2050	Satin Nickel	46.0" x 1.7" x 2.7"	YES

* More Color Temperature Option: 3500K, 5000K

* Finish Option: -62 Satin Nickel, -01 Polish Brass, -06 White, -30 Oil Rubbed Bronze

T5 LED STRIP

- * Housing: Die-formed cold-rolled steel
- * Shade: High transmission acrylic creates excellent light distribution and uniformity
- * LED: High efficiency, high CRI, binned and mixed to reach uniform light
- * 5 years warranty on driver and LED module
- * Certification: ETL / cETL , DLC listed



Model	Input Voltage	Input Wattage	Lumen	LED CT / CRI	Dimension (L x W x H)	DLC
622STD-HO-4000K	120V ~ 277V	10W	980	4000K / 80	22.5" x 2.0" x 2.3"	YES
622STD-HO-5000K	120V ~ 277V	10W	1020	5000K / 80	22.5" x 2.0" x 2.3"	YES
634STD-HO-4000K	120V ~ 277V	15W	1540	4000K / 80	34.0" x 2.0" x 2.3"	YES
634STD-HO-5000K	120V ~ 277V	15W	1660	5000K / 80	34.0" x 2.0" x 2.3"	YES
646STD-HO-4000K	120V ~ 277V	20W	2060	4000K / 80	46.0" x 2.0" x 2.3"	YES
646STD-HO-5000K	120V ~ 277V	20W	2190	5000K / 80	46.0" x 2.0" x 2.3"	YES

E26 & GU24 LED BULB

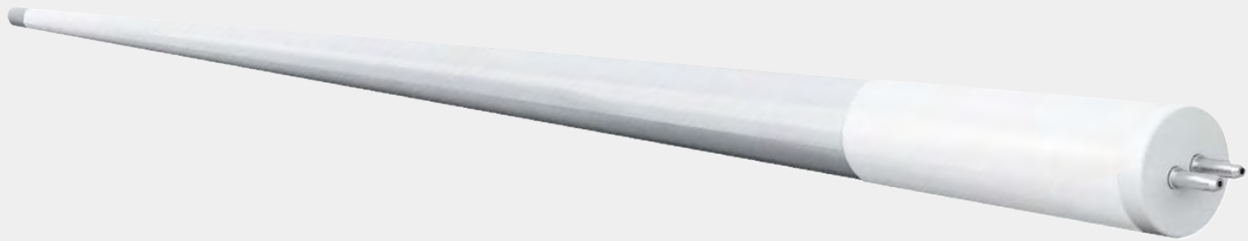
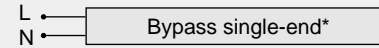


Model	Input Voltage	Wattage	Lumen (typ)	LED CT / CRI	Dimension (OD x H)	Energy Star
A19-9W-30K	120V	9W	800	3000K / 80	2.36" x 4.4"	YES
A19-9W-40K	120V	9W	800	4000K / 80	2.36" x 4.4"	YES
GU24-9W-30K-LS	120V	9W	870	3000K / 80	2.40" x 4.5"	YES
GU24-9W-40K-LS	120V	9W	900	4000K / 80	2.40" x 4.5"	YES
GU24-9W-30K	120V ~ 277V	10W	870	3000K / 80	2.40" x 4.5"	--
GU24-9W-40K	120V ~ 277V	10W	900	4000K / 80	2.40" x 4.5"	--
ST21-9W-27K	120V	9W	800	2700K / 90	2.52" x 5.7"	YES

T5 HO LED TUBE - TYPE B

* Input Voltage at Single End for Non-shunted Lamp Socket

- * Suitable for all existing fluorescent fixture re-trofit application
- * High light transmission frosted polycarbonate lens
- * Suitable for food preparation area
- * 5 years limited warranty
- * UL / cUL listed, DLC listed



Model	Input Voltage	Input Wattage	Lumen (typ)	CRI	Dimension (L x OD)	DLC
T5-46T-25W-PB-xxxxK	120V~277V	25W	3500	> 82	46" x 0.75"	YES

- * Lumen (typ): Tested with 3000K CT
- * Color Temperature Option: 3000K, 3500, 4000K, 5000K

T5 HO LED TUBE - TYPE A

- * Compatible with T5 HO Programmable-start electronic ballast
- * Compatible with some T5 HE Programmable-start electronic ballast

- * High light transmission frosted polycarbonate lens
- * Suitable for food preparation area
- * 5 years limited warranty
- * UL / cUL listed, DLC listed



Model	Input Voltage	Tube wattage	Lumen (typ)	Compatible Lamp	Dimension (L x OD)	DLC
T5LED-25W-8xx-EB	120V ~ 277V	25W	3000	T5HO 54W	45.5" x 0.67"	YES
T5LED-25W-864-EB	120V ~ 277V	25W	3100	T5HO 54W	45.5" x 0.67"	--
T5LED-16W-8xx-EB	120V ~ 277V	16W	2000	T5HO 39W	33.7" x 0.67"	--
T5LED-12W-8xx-EB	120V ~ 277V	12W	1400	T5HO 24W	21.9" x 0.67"	--

- * Lumen (typ): Tested with 3000K CT
- * Color Temperature Option: 3000K, 3500, 4000K, 5000K

LED T8 TUBE - TYPE B

Dual Functions - Double Ends / Single End

* Input Voltage at Double Ends for Shunted or Non-Shunted Lamp Socket

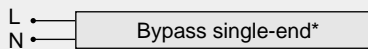
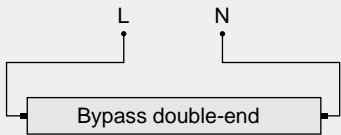
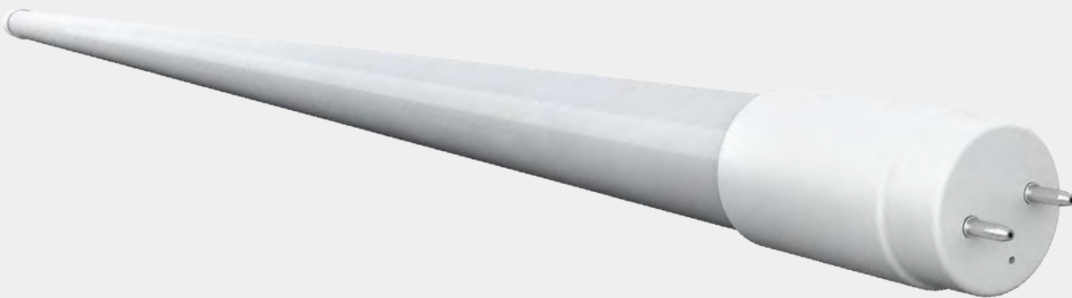
* Input Voltage at Single End for Non-shunted Lamp Socket

* Suitable for all existing fluorescent fixture re-trofit application

* Shatter proof glass type with PET film coated , suitable for food preparation area

* 5 years limited warranty

* UL / cUL listed, DLC listed



Model	Input Voltage	Tube Wattage	CRI	Lumen (typ)	Dimension (L x OD)	DLC
T8-48T-8xx-12W-DE	120V ~ 277V	12W	> 82	1800	48.0" x 1.3"	YES
T8-48T-8xx-14W-DE	120V ~ 277V	14W	> 82	1900	48.0" x 1.3"	YES
T8-48T-8xx-17W-DE	120V ~ 277V	17W	> 82	2400	48.0" x 1.3"	YES

* Lumen (typ): Tested with 3000K CT

* Color Temperature Option: 3000K, 3500K, 4000K, 5000K

LED T8 TUBE - TYPE A

* Compatible with instant-start and programmable start electronic ballast

* Compatible with emergency ballast

* Shatter proof glass type with PET film coated , suitable for food preparation area

* 5 years limited warranty

* UL / cUL listed, DLC listed

Model	Input Voltage	Tube Wattage	CRI	Lumen (typ)	Dimension (L x OD)	DLC
T8-48T-8xx-12W-EB4	120V ~ 277V	11W	> 82	1800	48.0" x 1.3"	YES
T8-48T-8xx-14W-EB4	120V ~ 277V	14W	> 82	2200	48.0" x 1.3"	YES
T8-48T-8xx-18W-EB4	120V ~ 277V	18W	> 82	2400	48.0" x 1.3"	YES

LED FLAT PANEL - 2'x2' & 2'x4'

- * Ultra thin LED panel light
- * Replace 2'x2' or 2'x4' troffer
- * High lumen efficiency and high CRI
- * 0 ~ 10V Dimming

- * Rated 50,000 hours LED life
- * UL / cUL listed / DLC listed
- * DLC premium
- * 5 years limited warranty



Model	Input Voltage	Input Wattage	LED CT	CRI	Lumen (nom)	Dimension (L x W x H)	DLC
TRD-2x2-40W-DIM 3000K	120V ~ 277V	40W	3000K	> 80	5200	2' x 2'	YES
TRD-2x4-50W-DIM 3000K	120V ~ 277V	50W	3000K	> 80	6500	2' x 4'	YES

- * Lumen (typ): Tested with 3000K CT
- * Color Temperature Option (-xxxxK): 3000K, 3500K, 4000K, 5000K

LED TROFFER

- * Housing: Die-formed cold-rolled steel
- * High light transmission polycarbonate diffuser
- * 0 ~ 10V Dimming
- * Certification: UL, cUL, DLC

- * Rated 50,000 hours LED life
- * High lumen efficiency
- * CRI > 80
- * 5 years limited warranty on driver and LED



Model	Input Voltage	Input Wattage	LED CT	CRI	Lumen (typ)	Dimension (L x W x H)	DLC
TRF-S-2x2-36W-xxxxK	120V ~ 277V	36W	4000K	> 80	4500	23.8" x 23.8" x 4.0"	YES
TRF-S-2x4-50W-xxxxK	120V ~ 277V	50W	4000K	> 80	6250	47.6" x 23.8" x 4.0"	YES

- * Lumen (typ): Tested with 4000K CT
- * Color Temperature Option (-xxxxK): 3000K, 3500K, 4000K, 5000K

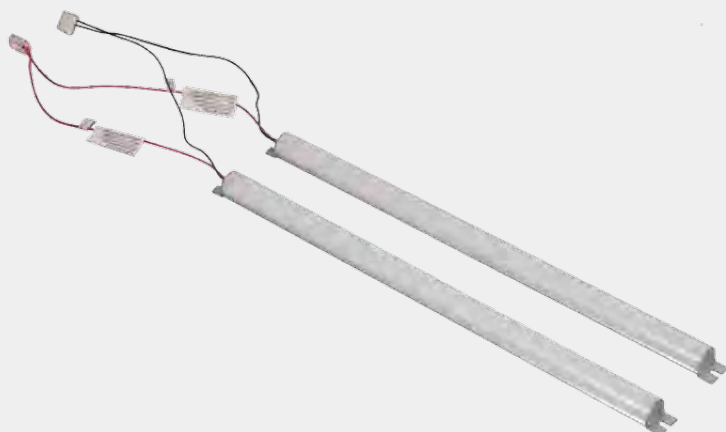
LED RE-TROFIT KIT FOR TROFFER

- * Aluminum extrusion housing with easy mounting bracket
- * Magnet construction makes easy pre-alignment on installation

* High transmission acrylic creates excellent light distribution and uniformity

* Certification: ETL / cETL , DLC listed

* 5 years warranty on driver and LED module



Model	Input Voltage	Input Wattage	Lumen (typ)	LED CT / CRI	Dimensions (L x W x H)	DLC
RT-2x2-2L-HO-xxxxK	120V ~ 277V	19W	1900	4000K / 80	20.7" x 1.0" x 0.8"	Standard
RT-2x2-3L-HO-xxxxK	120V ~ 277V	29W	2820	4000K / 80	20.7" x 1.0" x 0.8"	Standard
RT-2x4-2L-HO-xxxxK	120V ~ 277V	37W	3780	4000K / 80	44.2" x 1.0" x 0.8"	Standard
RT-2x4-3L-HO-xxxxK	120V ~ 277V	55W	5620	4000K / 80	44.2" x 1.0" x 0.8"	Standard
RT-2x2-2L-VHO-xxxxK	120V ~ 277V	16W	2050	4000K / 80	20.7" x 1.0" x 0.8"	--
RT-2x2-3L-VHO-xxxxK	120V ~ 277V	23W	2950	4000K / 80	20.7" x 1.0" x 0.8"	--
RT-2x4-2L-VHO-xxxxK	120V ~ 277V	30W	3960	4000K / 80	44.2" x 1.0" x 0.8"	Premium
RT-2x4-3L-VHO-xxxxK	120V ~ 277V	44W	5780	4000K / 80	44.2" x 1.0" x 0.8"	Premium

* Lumen (typ): Tested with 4000K CT

* Color Temperature Option (-xxxxK): 4000K, 5000K

LED REFRIGERATED CASE LIGHT & DISPLAY CASE LIGHT

- * LED driver: 120V ~ 277V, Class 2, 24V DC, constant voltage, 100W
- * Clear PC tube - Vapor tight
- * Adjustable light direction, offers even light
- * Min. starting temperature - -30°C



SINGLE LIGHT

Model	Driver Input Voltage	Light Input Voltage	Wattage	LED CT	CRI	Lumen (nom)	Dimension (L x W x H)	DLC
60-18W	120V ~ 277V	DC 24V	18W	5000K	>80	1540	57.0" x 1.2" x 1.1"	--
72-18W	120V ~ 277V	DC 24V	18W	5000K	>80	1540	69.0" x 1.2" x 1.1"	YES

* Color Temperature Option: 3000K or 4000K



DOUBLE LIGHT

Model	Driver Input Voltage	Light Input Voltage	Wattage	LED CT	CRI	Lumen (nom)	Dimension (L x W x H)	DLC
60-36W	120V ~ 277V	DC 24V	36W	5000K	>80	3080	57.0" x 2.2" x 1.1"	--
72-36W	120V ~ 277V	DC 24V	36W	5000K	>80	3080	69.0" x 2.2" x 1.1"	YES

* Color Temperature Option: 3000K or 4000K

LED LANDSCAPE LIGHT

- * Die-cast aluminum housing with powder coated finish
- * Wet location rated
- * LED Driver: UL R/C Constant Current type



3-1010D



3-1009D



3-1020D

FLOOD & PAGODA

Model	Input Voltage	LED Wattage	Beam Angle	LED CT	Lumen	Dimension
3-1010D-3W-3K	120V	3 x 1W	40 degree	3000K	320	5.5" x 3.8" x 7.2"
3-1010D-3W-5K	120V	3 x 1W	40 degree	5000K	340	5.5" x 3.8" x 7.2"
3-1020D-4W-3K	120V	4 x 1W	120 degree	3000K	80	6.0"OD x 11.0"H
3-1020D-4W-5K	120V	4 x 1W	120 degree	5000K	100	6.0"OD x 11.0"H
3-1009D-3W-5K	12V AC/DC	MR16 3W LED	30 degree	5000K	210	2.5"OD x 6.0"H

LED UNDERWATER LIGHT



Model	Input Voltage	LED Wattage	Housing	LED CT	Lumen	Dimension
3-6021-1W	12V AC/DC	MR16 1W LED	Stainless Steel	3000K	60	3.2" x 4.0" x 5.5"
3-6021-3W	12V AC/DC	MR16 3W LED	Stainless Steel	5000K	150	3.2" x 4.0" x 5.5"

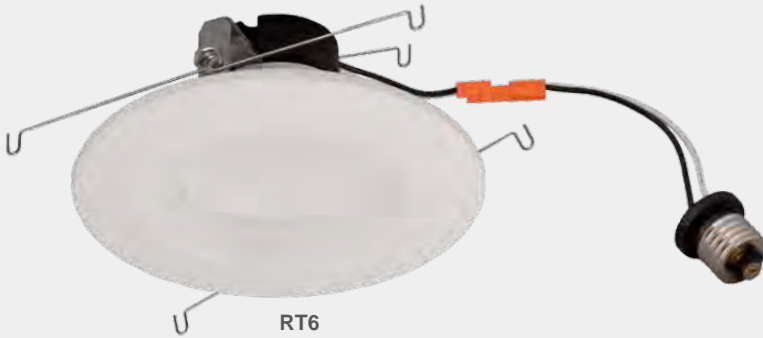
- * Cable Length - 9 feet nom
- * External Transformer - 12V AC, 3VA ~ 12VA isolation transformer (not included)

LED RE-TROFIT KIT FOR RECESS CAN LIGHT

***** J-Box Direct Mounting or Recess Can Re-trofit *****



- * Housing: Die-formed Aluminum with epoxy powder coating or anodized
- * Shade: High transmission acrylic creates excellent light distribution and uniformity
- * 120V, Triac dimming type
- * Certification: ETL / cETL, Energy Star
- * Color Temperature Option: 3000K or 3500K or 4000K or 5000K
- * Finish: -06 White, -62 Satin Nickel, -30 ORB



Model	Input Voltage	Input Wattage	LED CT / CRI	Finish	Lumen (typ)	Dimension	Energy Star
RT6-xxxxK	120V	13.2W	3000K / 90	White	860	7.5" x 3.8"	YES
RT7-A-06-xxxxK	120V	15W	3000K / 80	White	1210	7.4" x 1.5"	YES
RT7-A-62-xxxxK	120V	15W	3000K / 80	Satin Nickel	1210	7.4" x 1.5"	YES

* xxxxK: LED Color Temperature: 3000K or 4000K

LED DISK LIGHT & SUPER THIN DISK LIGHT

***** J-Box Direct Mounting or Recess Can Re-trofit *****

***** JA8 Type ***** External Driver Type *****



- * Housing: Polycarbonate
- * Shade: High performance glass
- * LED Driver: On board 120V, Triac dimming type or 120V ~ 277V, 0-10V dimming
- * Certification: ETL / cETL, Energy Star
- * Color Temperature Option: 3000K, 3500K, 4000K
- * LED CRI: >80



RT8 White



RT8 external driver type



RT8 SN

Model	Input Voltage	Input Wattage	LED CT	CRI	Lumen (typ)	Dimension (OD x H)	Energy Star
RT8-7-12W-xxxxK	120V	12W	3000K	> 80	960	7.10" x 0.55"	YES
RT8-9-18W-xxxxK	120V	18W	3000K	> 80	1500	8.86" x 0.55"	YES
RT8-12-24W-xxxxK	120V	24W	3000K	> 80	2100	11.82" x 0.55"	YES
RT8-7-12W-xxxxK (JA8)	120V	12W	3000K	> 80	700	7.10" x 0.55"	YES
RT8-9-18W-xxxxK (JA8)	120V	18W	3000K	> 80	1020	8.86" x 0.55"	YES
RT8-12-24W-xxxxK (JA8)	120V	24W	3000K	> 80	1500	11.82" x 0.55"	YES
RT8-9-18W-xxxxK-UNVD1	120V~277V	18W	3000K	> 80	1500	8.86" x 0.55"	YES
RT8-12-24W-xxxxK-UNVD1	120V~277V	24W	3000K	> 80	2000	11.82" x 0.55"	YES

* Lumen measured at 3000K CT

* Finish Option: -62 Stain Nickel, -30 Oil Rubbed Bronze

LED HIGH BAY

* DLC Standard or Premium Listed Models

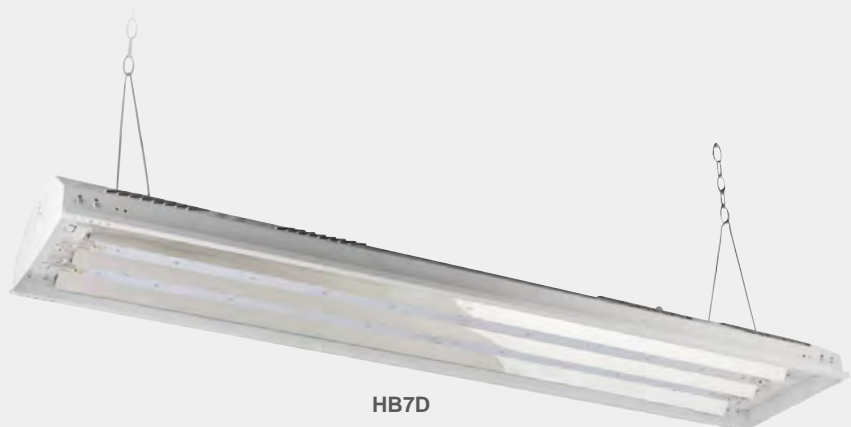
* Available with Bi-Level Dimming

- * Housing: Die-formed cold-rolled steel
- * Eco-frame or full body construction
- * LED: High efficiency and high CRI
- * UL2459 / CSA182.3 power connector included
- * ETL / cETL listed

- * V hook & hanging chain included
- * Lens: High transmission acrylic shade
- * LED life - 50,000 hours
- * 5 years limited warranty
- * DLC listed



HB5D / HB6D / HB8D



HB7D

Model	Input Voltage	Input Wattage	LED CT	Lumen (typ)	CRI	Dimensions (L x W x H)	DLC
HB5D-110-HE(5000K)	120V ~ 277V	110W	5000K	14680	>80	21.5" x 11.8" x 2.0"	Standard
HB6D-160-HE(5000K)	120V ~ 277V	165W	5000K	22020	>80	21.5" x 16.0" x 2.0"	Standard
HB7D-110-HE(5000K)	120V ~ 277V	110W	5000K	14680	>80	44.0" x 10.0" x 3.4"	Standard
HB7D-160-HE(5000K)	120V ~ 277V	165W	5000K	22020	>80	44.0" x 10.0" x 3.4"	Standard
HB8D-220-HE(5000K)	120V ~ 277V	220W	5000K	29370	>80	43.0" x 11.8" x 2.0"	Standard
HB5D-92W-VHO-5000K	120V ~ 277V	92W	5000K	11970	>80	21.5" x 11.8" x 2.0"	Premium
HB6D-140W-VHO-5000K	120V ~ 277V	140W	5000K	18200	>80	21.5" x 16.0" x 2.0"	Premium
HB7D-140-VHO-5000K	120V ~ 277V	140W	5000K	18320	>80	44.0" x 10.0" x 3.4"	Premium
HB8D-185W-VHO-5000K	120V ~ 277V	185W	5000K	24500	>80	43.0" x 11.8" x 2.0"	Premium

* Available with 4000K CT

-LS: With Lens

-Bi: Bi-level lighting

-EM: With Built-in Emergency Driver or External Emergency Driver

LED HIGH BAY

***** Built-in Emergency Lighting *****

***** Bi-Level Lighting *****

- * Housing: Die-formed cold-rolled steel
- * Eco-frame construction
- * LED: High efficiency and high CRI
- * UL2459 / CSA182.3 power connector included
- * ETL / cETL listed

- * V hook & hanging chain included
- * LED life - 50,000 hours
- * 5 years limited warranty
- * Lens: High transmission acrylic shade
- * DLC listed



Model	Input Voltage	Input Wattage	LED CT	CRI	Lumen (typ)	Dimension (L x W x H)	DLC Premium
HB12D-85W-VHO-5000K	120V ~ 277V	81W	5000K	80	11490	21.0" x 16.0" x 1.5"	YES
HB12D-105W-VHO-5000K	120V ~ 277V	101W	5000K	80	14550	21.0" x 16.0" x 1.5"	YES
HB15D-130W-VHO-5000K	120V ~ 277V	125W	5000K	80	17760	21.0" x 20.0" x 1.5"	YES
HB16D-170W-VHO-5000K	120V ~ 277V	165W	5000K	80	23060	43.0" x 16.0" x 1.5"	YES
HB16D-210W-VHO-5000K	120V ~ 277V	205W	5000K	80	29400	43.0" x 16.0" x 1.5"	YES
HB17D-253W-VHO-5000K	120V ~ 277V	244W	5000K	80	34950	43.0" x 20.0" x 1.5"	YES
HB17D-340W-VHO-5000K	120V ~ 277V	323W	5000K	80	46220	43.0" x 20.0" x 1.5"	YES

- * Available with 4000K CT
- LS: With Lens
- Bi: Bi-level lighting (with High Frequency Sensor)
- EM: With Built-in Emergency Driver or External Emergency Driver

LED HIGH BAY

***** Built-in Emergency Lighting *****

***** Bi-Level Lighting *****

- * Housing: Die-formed cold-rolled steel
- * Full body construction
- * LED: High efficiency and high CRI
- * UL2459 / CSA182.3 power connector included
- * ETL / cETL listed

- * V hook & hanging chain included
- * LED life - 50,000 hours
- * 5 years limited warranty
- * Lens: High transmission acrylic shade
- * DLC listed



LB2D



HB10D

Model	Input Voltage	Input Wattage	LED CT	CRI	Lumen (typ)	Dimension (L x W x H)	DLC
LB1D-42W-VHO-5000K	120V ~ 277V	42W	5000K	80	5780	21.0" x 9.0" x 3.5"	Premium
LB2D-65W-VHO-5000K	120V ~ 277V	62W	5000K	80	8720	21.0" x 12.0" x 3.5"	Premium
HB10D-85W-VHO-5000K	120V ~ 277V	81W	5000K	80	11390	43.0" x 9.0" x 3.5"	Premium
HB10D-105W-VHO-5000K	120V ~ 277V	104W	5000K	80	14770	43.0" x 9.0" x 3.5"	Premium
HB11D-130W-VHO-5000K	120V ~ 277V	125W	5000K	80	17830	43.0" x 12.0" x 3.5"	Premium

- * Available with 4000K CT
- LS: With Lense
- Bi: Bi-level lighting
- EM: With Built-In Emergency Driver or External Emergency Driver

LED HIGH BAY OPTIONS

***** Built-in Emergency Lighting *****

***** Bi-Level Lighting *****



-LS: With Lens

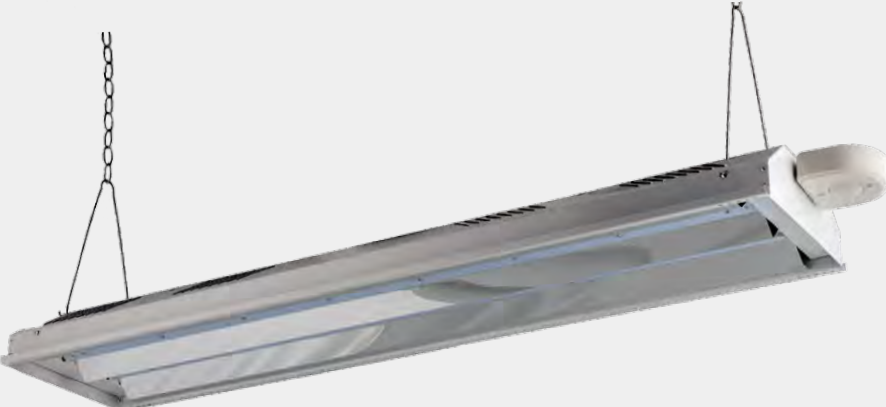


-PD: Pendant Mount



-LV: With On-Off Motion Sensor

-BI: Bi-level lighting



-EM: With Built-in Emergency Driver or External Emergency Driver

ROUND LED HIGH BAY

- * Housing: Die-formed aluminum fins design with powder coating
- * High thermal conductive material with high efficient heat transfer construction design
- * Shade: High transmission acrylic creates excellent light distribution
- * Optical lens option: 60/90/120 degree beam angle offers preferred light distribution
- * IP65 rated, suitable for wet location application
- * 5 years warranty on LED module and LED driver
- * ETL / cETL, DLC listed

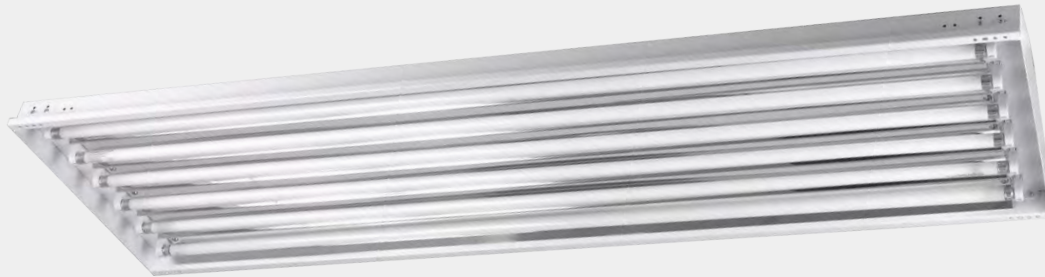


Model	Input Voltage	Input Wattage	LED CT	Lumen (typ)	Finish	Shade	Dimension (OD x H)	DLC
HB100-5000K-90	120V ~ 277V	100W	5000K	13000	Black	Acrylic	14.1" x 7.9"	YES
HB150-5000K-90	120V ~ 277V	150W	5000K	19500	Black	Acrylic	17.0" x 8.3"	YES

- * Standard stock item - 90 degree beam angle
- * Options -
 - Bi: Bi-level lighting with occupancy sensor
 - EM: Emergency back up

HIGH BAY FIXTURE

- * Housing: Die-formed cold-rolled steel, powder coated finish
- * Precision formed reflector to achieve maximum light output
- * Programmable start T5 HO ballast
- * UL 2459/ CSA 182.3 power connector included
- * V hook & hanging chain included



4 LAMPS / 6 LAMPS / 8 LAMPS - FLUORESCENT LAMP OR T5 LED TUBES

Model	Input Voltage	Fluorescent Lamp	LED Tube	Dimension (L x W x H)
HB1-4T5-N	120V ~ 277V	4 x T5HO 54W	4 x 25W T5 LED	48.2" x 10.0" x 3.5"
HB1-6T5-N	120V ~ 277V	6 x T5HO 54W	6 x 25W T5 LED	48.2" x 14.5" x 3.5"
HB-8T5-N	120V ~ 277V	8 x T5HO 54W	8 x 25W T5 LED	48.2" x 17.4" x 3.5"

- * LED Tube: Type A, DLC listed



306 Rexdale Blvd, Unit 11 Etobicoke
Ontario, Canada M9W 1R6
Telephone: 416-742-4387
Fax : 416-742-0830
E-mail: info@xtclighting.com
Website www.xtclighting.com